



Bezares Group

Catálogo Técnico

Válvulas CETOP

Technical catalog CETOP Valves



Válvulas CETOP 3 / CETOP 3 Valves..... 3

Válvulas CETOP 5 / CETOP 5 Valves..... 21

Válvulas CETOP 7 / CETOP 7 Valves..... 37

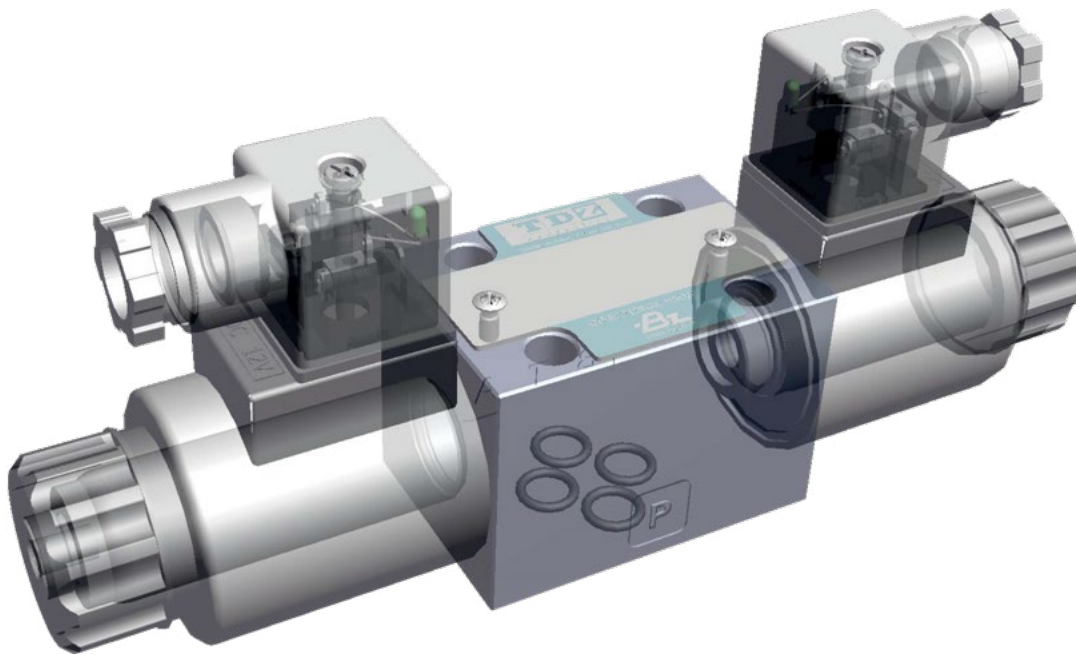
Válvulas CETOP 8 / CETOP 8 Valves..... 43

Válvulas CETOP 10 / CETOP 10 Valves..... 49



bezares.com
bezares@bezares.com
Avenida de las Retamas, 145
45950 • Toledo • España

La información de este catálogo puede ser modificada o actualizada sin previo aviso.
These information can be modified or updated without prior notice.



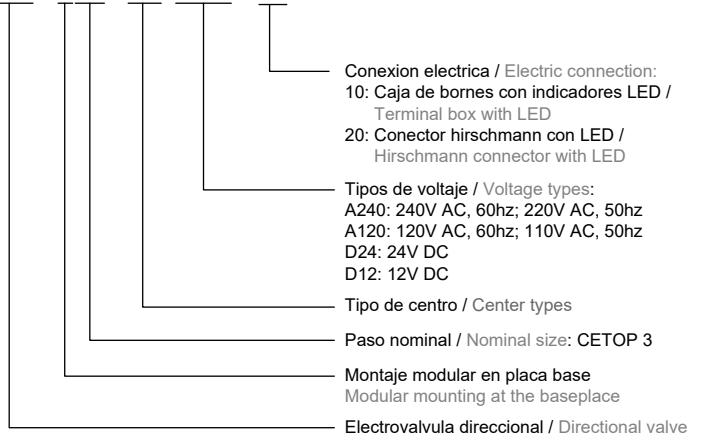
Indice / Contents

Válvulas CETOP 3 / CETOP 3 Valves (NG06)				3
SWH G02.....	4	MT 02 A/B/W.....		12
MRF 02.....	6	MC 02.....		14
MPR 02.....	8	MPC 02.....		16
MT 02.....	10	MSC 02.....		18
Válvulas CETOP 5 / CETOP 5 Valves (NG10)				21
SWH G03.....	22	MT 03 A/B/W.....		30
MRF 03.....	24	MC 03.....		32
MPR 03.....	26	MSC 03.....		34
MT 03.....	28			
Válvulas CETOP 7 / CETOP 7 Valves (NG16)				37
SWH G04.....	38	MT 04 A/B/W.....		41
MPR 04.....	40	MPC 04.....		42
Válvulas CETOP 8 / CETOP 8 Valves (NG25)				43
SWH G06.....	44	MT 06 A/B/W.....		47
MPR 06.....	46	MPC 06.....		48
Válvulas CETOP 10 / CETOP 10 Valves (NG32)				49
SWH G10.....	50	Condiciones generales de Venta		52

SWH G02



SWH - G02 - C2 - A220 - 10 - 45H



Datos Principales Main Data

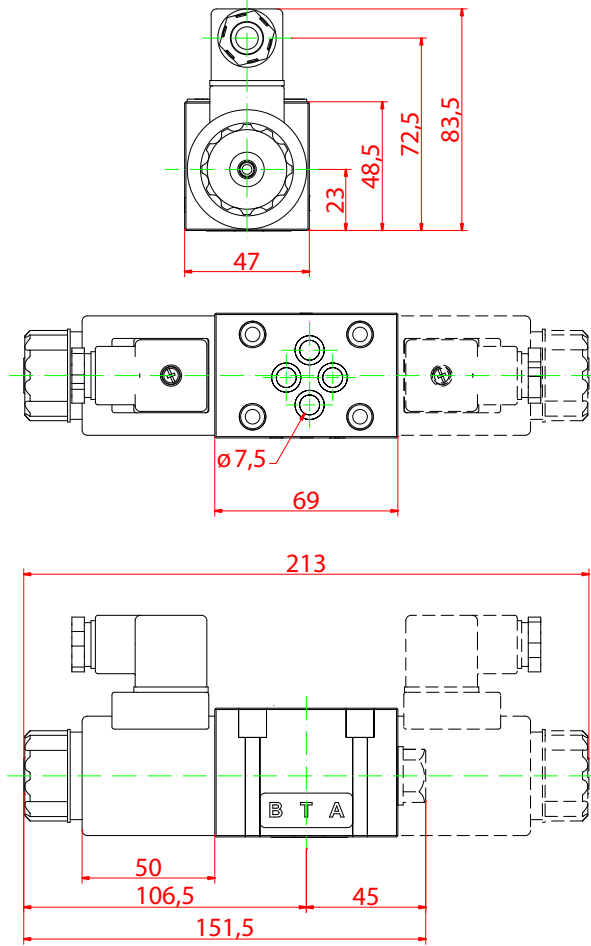
Temp. de trab. / Working Temp: 5°C - 60°C
Visc. de aceite / Oil viscosity: 15 - 300 cst
Filtración / Filtering: 25 micras

Éstandar Standard		Inversa Inverted	
Esquemas Schemes	Referencias P/N	Esquemas Schemes	Referencias P/N
	C2B		C2BS
	C3B		C3BS
	C4B		C4BS
	C40B		C40BS
	C5B		C5BS
	C6B		C6BS
	C9B		C9BS
	C10B		C10BS
	C11B		C11BS
	C12B		C12BS

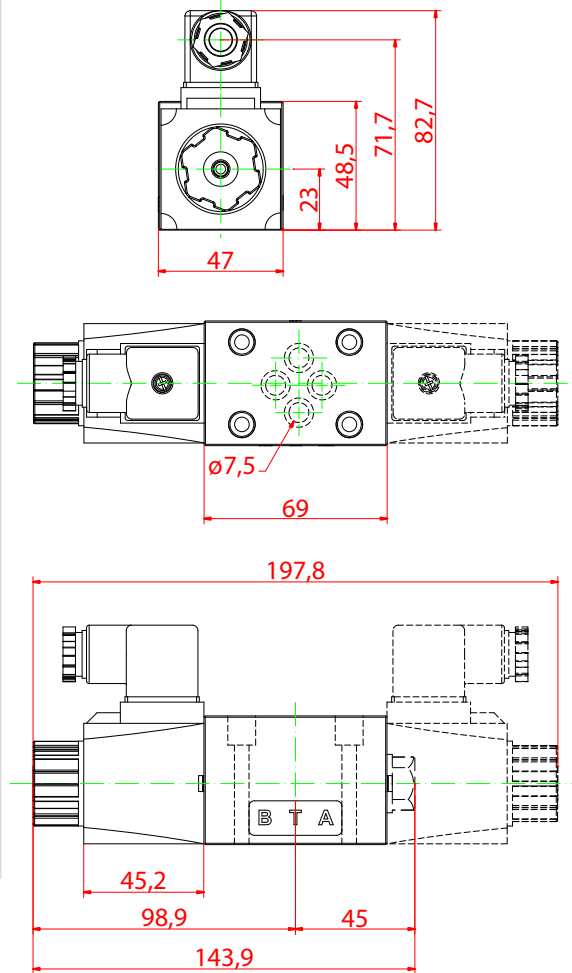
	Esquemas Schemes	Referencias P/N	Caudal Máx. Max flow	
2 posiciones cen- trada por muelle 2 positions spring-centered		SWH-G02-B2	30 - 63	
		SWH-G02-B3		
		SWH-G02-B20		
3 posiciones cen- trada por muelle 3 positions spring-centered		SWH-G02-C2		
		SWH-G02-C3		
		SWH-G02-C4		
		SWH-G02-C40		
		SWH-G02-C5		20 - 40
		SWH-G02-C6		
2 posiciones con enclavamiento 2 position w/ interlocking		SWH-G02-C9		30 - 63
		SWH-G02-C11		
		SWH-G02-C12		
		SWH-G02-D2		

SWH G02

DC



AC



Especificaciones técnicas

Technical specifications

		AC	DC
Presión de trabajo (P/A/B) Work Pressure		315 bar	
Contrapresión máx. (T) Max. Counter pressure		160 bar	210 bar
Peso (Kg.) Weight	2 Solenoides 2 Solenoids	1,95	
	1 Solenoide 1 Solenoid	1,45	
Máximo nº de ciclos (x min.) Maximum cycles/minutes		120	250
Protección Protection		IP 69K	IP 65
T coil Max.		180°C (Class H)	135°C (Class B)

		AC				DC	
V		110	120	220	240	12	24
Hz		50	60	50	60	-	-
Consumo arranque Starting Current (A)		-	-	0,72	-	-	-
Consumo mantenido Holding Current (A)		-	-	0,27	-	-	-
W		-	-	-	-	30	30
V (Min-Max)		90 ~130		200 ~260		10,8-13,2	21,6-26,4

MRF 02

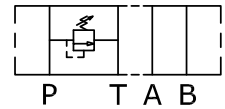


MRF - 02 P - K - 1 - 20

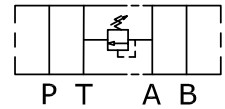
- Numero de diseño / Design Number
- Presion / Pressure
 - 1 : 8-70kgf/cm² (120-1000psi)
 - 2 : 35-140kgf/cm² (500-2000psi)
 - 3 : 70-210kgf/cm² (1000-3000psi)
- Mando de regulacion / Regulator
 - K : con pomo / knob
 - Sin codigo / No code: con tornillo / screw
- Control de presion / Pressure control
 - P : linea P / P line
 - A : linea A / A line
 - B : linea B / B line
 - C : lineas A y B (descarga a tanque) / A & B (Tank return)
 - D : lineas A y B cruzadas / A & B crossed lines
- Dimensionado de roscas / Thread size
 - 02 : 1/4"
- Limitadora de presion modular / Modular Relief Valve

Datos Principales Main Data

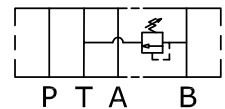
Presion operativa maxima / Maximum working pressure: 250 kgf/cm²
Caudal Maximo / Max flow: 50LPM (13,1 GPM)



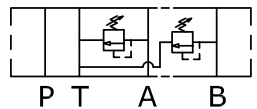
MRF-02P



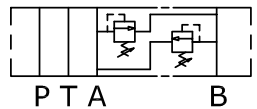
MRF-02A



MRF-02B



MRF-02C



MRF-02D

GRÁFICO GENERAL

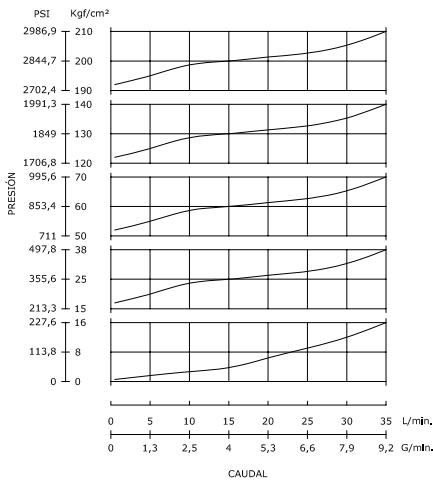
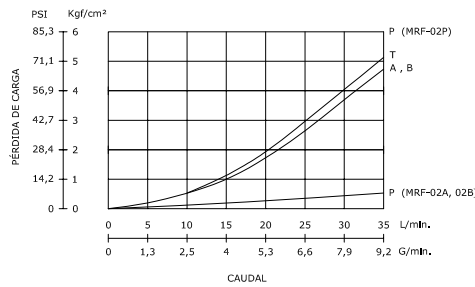
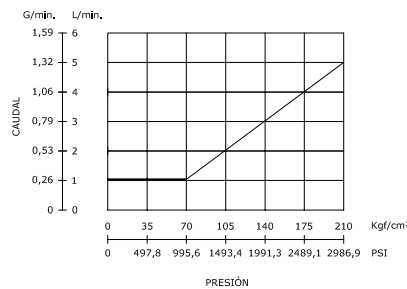


GRÁFICO DE PÉRDIDA DE CARGA

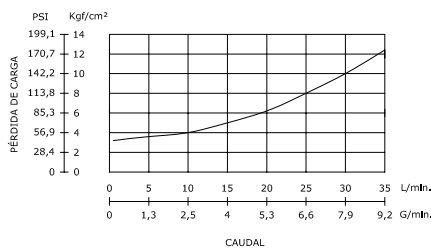


Viscosidad del aceite / Oil viscosity: 35 cst (175 ssu)
Temperatura / Temperature: 50° c (122° f)

MÍNIMO CAUDAL

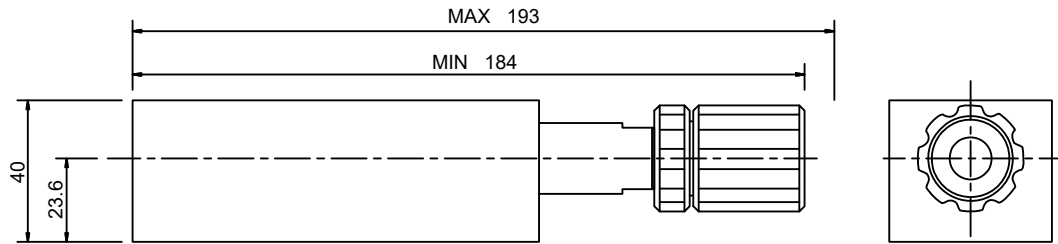
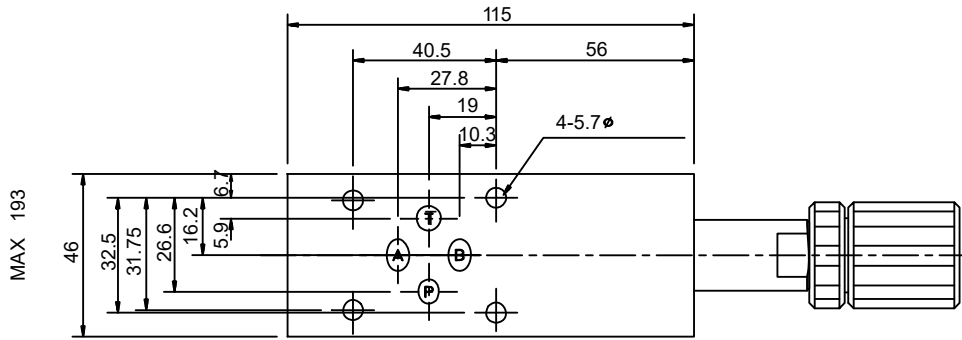


AJUSTE MÍNIMO DE PRESIÓN

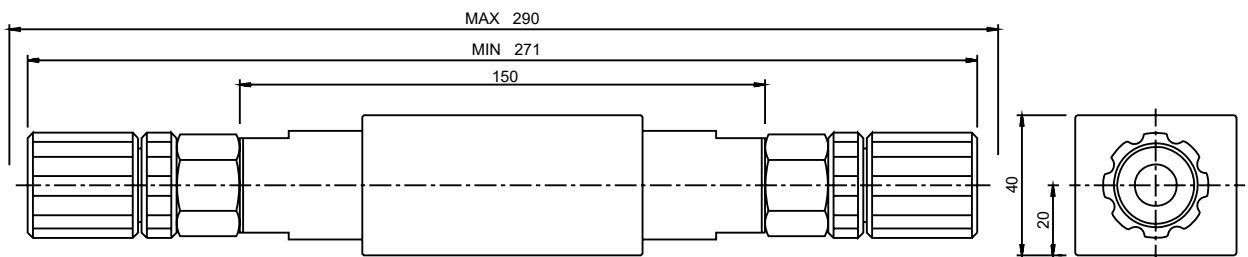
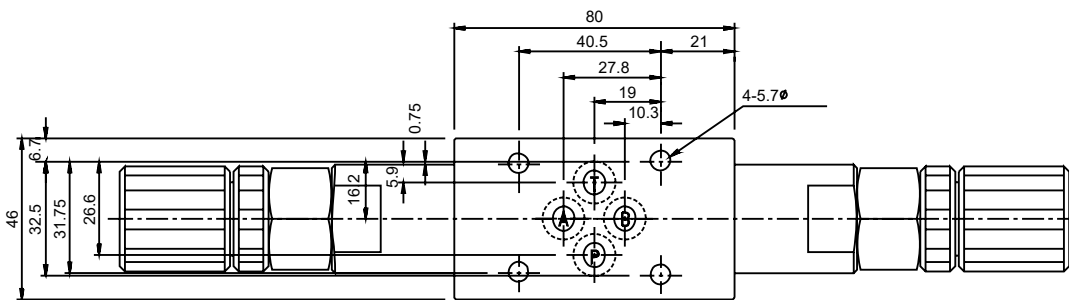


MRF 02

MRF - 02P - * - * - 20



MRF - 02C/D - * - * - 20



MPR 02



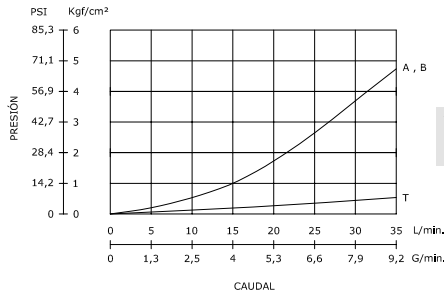
MPR - 02 P - K - 1 - 20 - N

- Sin codigo : con toma de manometro rosca standard
Without code: with standard thread gauge
- Codigo N : con toma de manometro rosca npt
N: with npt thread gauge
- Numero de diseño / Design number
- Rango de ajuste de presión / Pressure adjusting range
0 : 1,5-35kgf/cm² (20-500psi)
1 : 8-70kgf/cm² (120-1000psi)
2 : 35-140kgf/cm² (500-2000psi)
3 : 70-210kgf/cm² (1000-3000psi)
- Mando de regulación / Control knob
K: con pomo / with knob
Sin codigo: con tornillo de regulación / No code: with adjusting screw
- Control de presión / Pressure control
P : Línea P / P Line
A : Línea A / A Line
B : Línea B / B Line
- Dimensionado de roscas / Thread size
02 : 1/4"
- Valvula reductora de presión modular
Modular pressure reducing valve

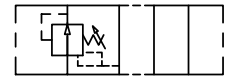
Datos Principales Main Data

Presión operativa máxima / Maximum working pressure: 250 kgf/cm³
Caudal Máximo / Max flow: 50LPM (13,1 GPM)

GRÁFICO DE PÉRDIDA DE CARGA

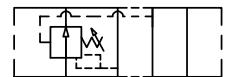


Viscosidad del aceite / Oil viscosity: 35 cst (175 ssu)
Temperatura / Temperature: 50° c (122° f)



P T A B

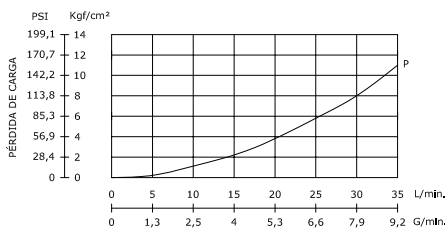
MPR-02P



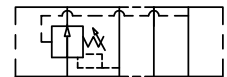
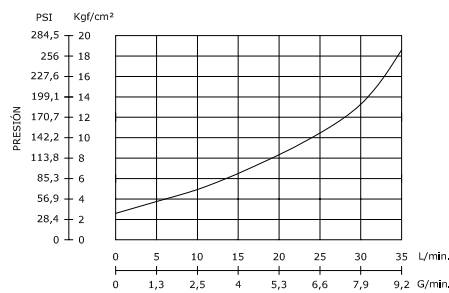
P T A B

MPR-02A

GRÁFICO DE PÉRDIDA DE CARGA
CON LA CORREDERA
COMPLETAMENTE ABIERTA



AJUSTE MÍNIMO DE PRESIÓN
VS CAUDAL MÁXIMO

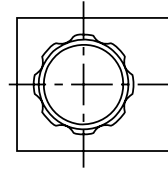
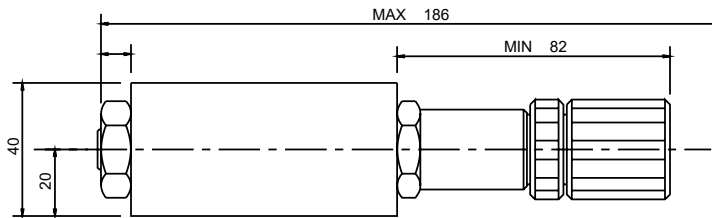
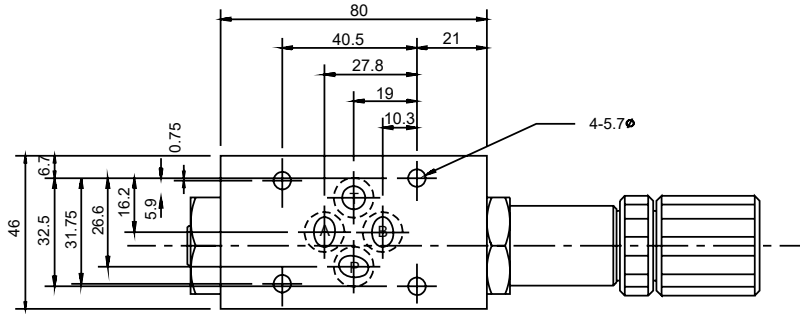


P T A B

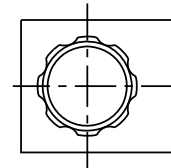
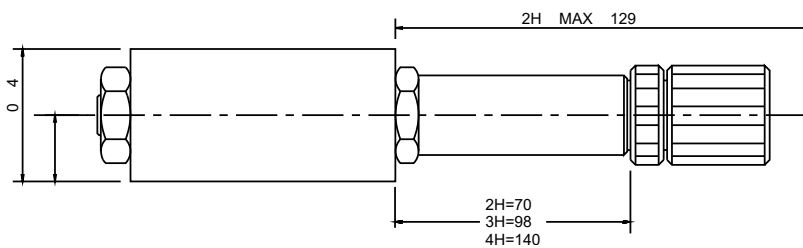
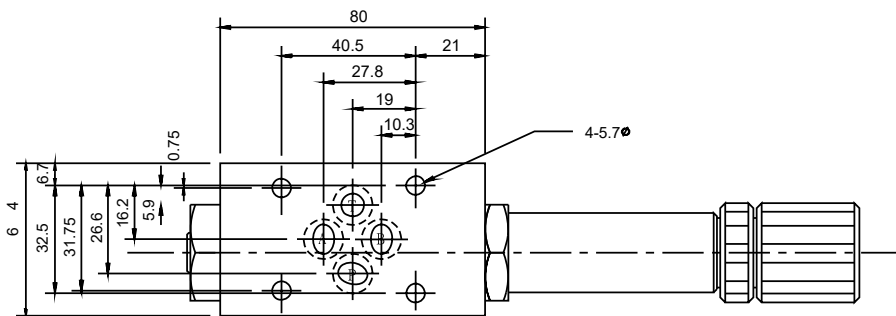
MPR-02B

MPR 02

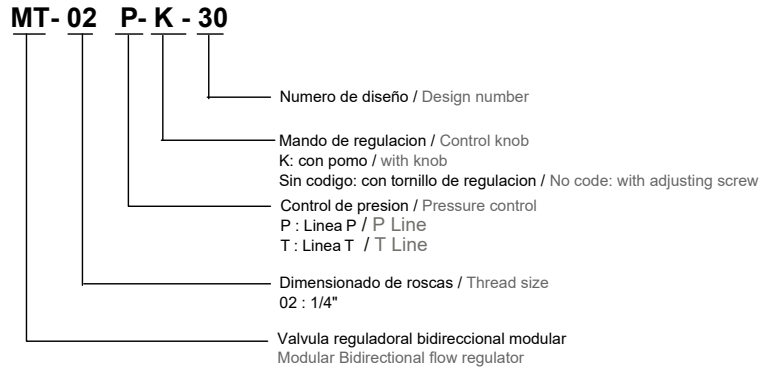
MPR-02-**-20



MPR-02-**-**-H-20



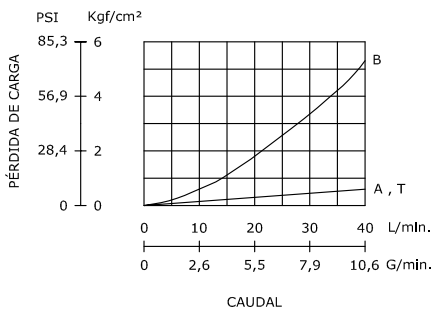
MT 02



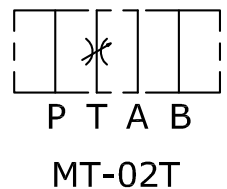
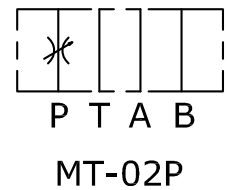
Datos Principales Main Data

Presion operativa maxima / Maximum working pressure: 250 kgf/cm³
Caudal Maximo / Max flow: 50LPM (13,1 GPM)

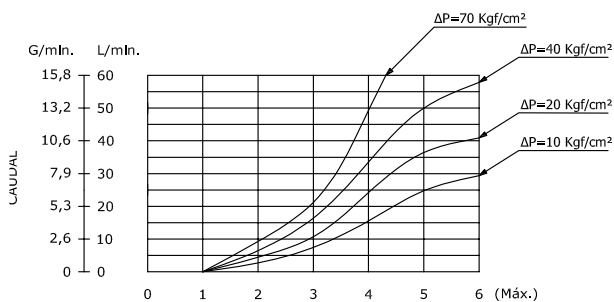
GRÁFICO DE PÉRDIDA DE CARGA



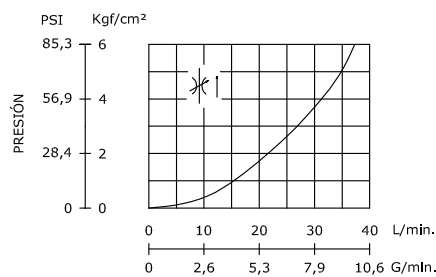
Viscosidad del aceite / Oil viscosity: 35 cst (175 ssu)
Temperatura / Temperature: 50° c (122° f)



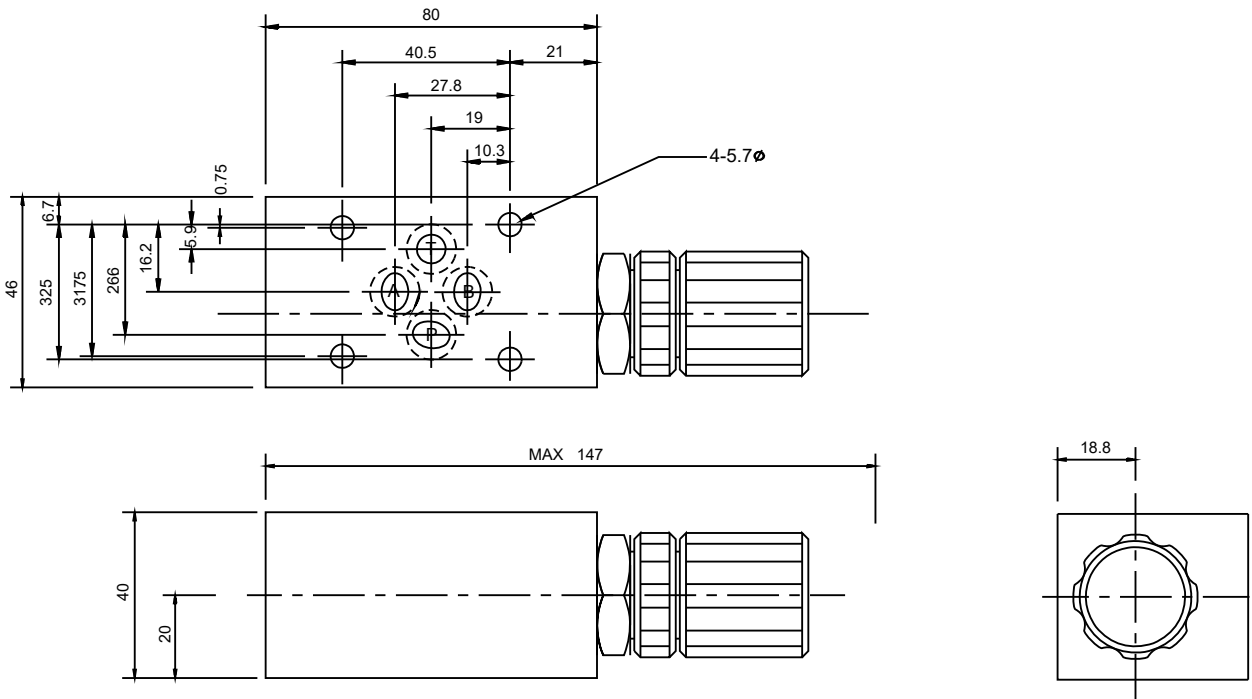
CAUDAL SEGUN REGULACIÓN DEL POMO



PÉRDIDA DE CARGA CON REGULADOR COMPLETAMENTE ABIERTO



MT 02



MT 02 A/B/W



MT - 02 W - K - I - 30

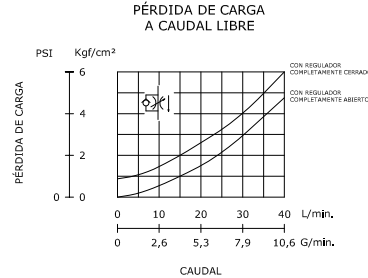
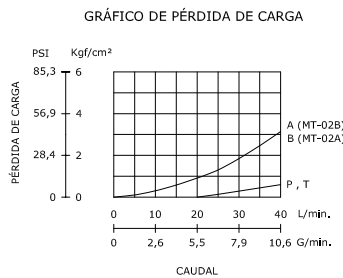
- Numero de diseño / Design number
- Direccion de la regulacion del caudal / Flow regulation direction
I: en entrada / at input
Sin codigo: en salida / at output
- Mando de regulacion / Control knob
K: con pomo / with knob
Sin codigo: con tornillo de regulacion / No code: with adjusting screw
- Regulacion de caudal / Flow control
A : Linea A / A Line
B : Linea B / B Line
W : Lineas A Y B / A and B lines
- Dimensionado de roscas / Thread size
02 : 1/4"
- Valvula reguladora unidireccional modular
Modular unidirectional flow regulator

Datos Principales Main Data

Presion operativa maxima / Maximum working pressure: 250 kgf/cm³
Caudal Maximo / Max flow: 50LPM (13,1 GPM)



P T A B
MT-02A

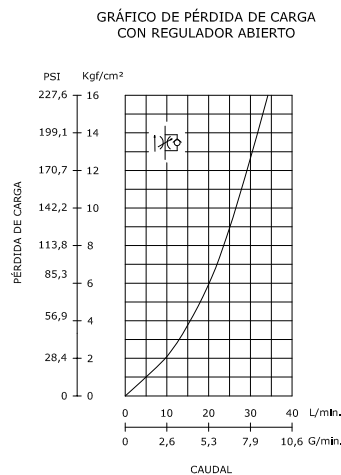
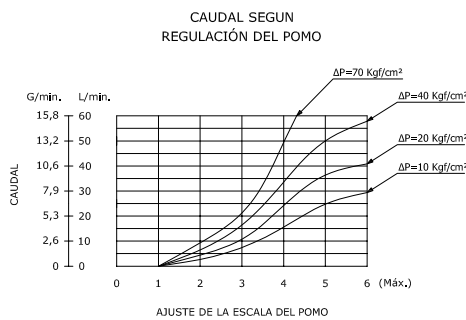


P T A B
MT-02B



P T A B
MT-02W

Viscosidad del aceite / Oil viscosity: 35 cst (175 ssu)
Temperatura / Temperature: 50° c (122° f)



P T A B
MT-02A-I



P T A B
MT-02B-I



P T A B
MT-02W-I

MC 02



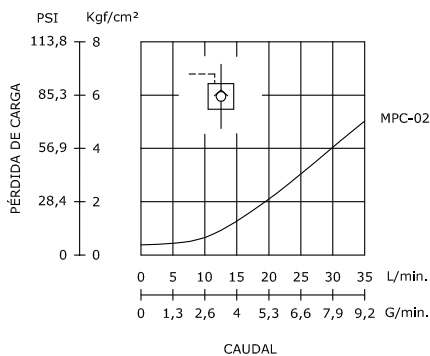
MC - 02 P - 50 - 20

- Numero de diseño / Design number
- Presion de apertura / Opening pressure
05 : 0.35kgf/cm² (7 PSI)
50 : 3.5kgf/cm² (50 PSI)
- Posicion del antirretorno / Non-return position
P : En Linea P / P line
A : En Linea A / A line
B : En Linea B / B line
T : En Linea T / T line
- Dimensionado de roscas / Thread size
02 : 1/4"
- Valvula antirretorno modular CETOP 3
CETOP 3 modular check valve

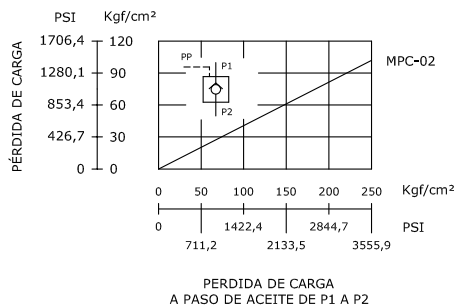
Datos Principales Main Data

Presion operativa maxima / Maximum working pressure: 250 kgf/cm³
Caudal Maximo / Max flow: 50LPM (13,1 GPM)

PÉRDIDA DE CARGA
A CAUDAL LIBRE



PILOTAJE MÍNIMO



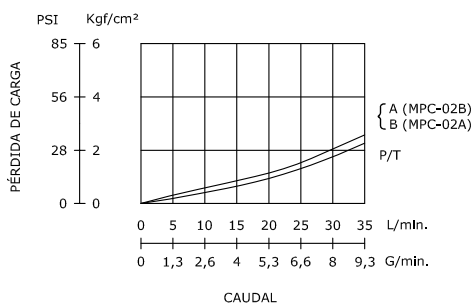
MC-02P



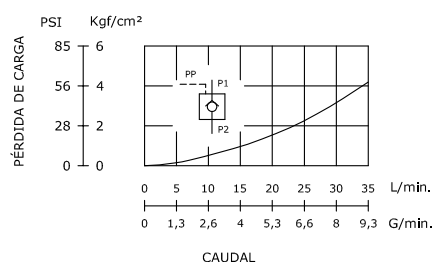
MC-02T

Viscosidad del aceite / Oil viscosity: 35 cst (175 ssu)
Temperatura / Temperature: 50° c (122° f)

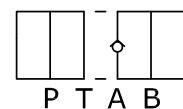
PÉRDIDA DE CARGA
A CAUDAL LIBRE



PÉRDIDA DE CARGA
A PASO DE ACEITE DE P1 A P2
CON PILOTAJE MÍNIMO



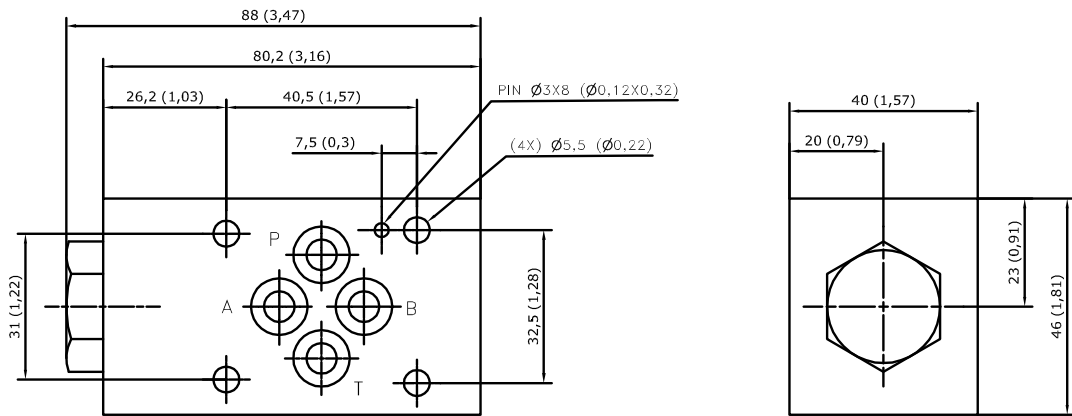
MC-02B



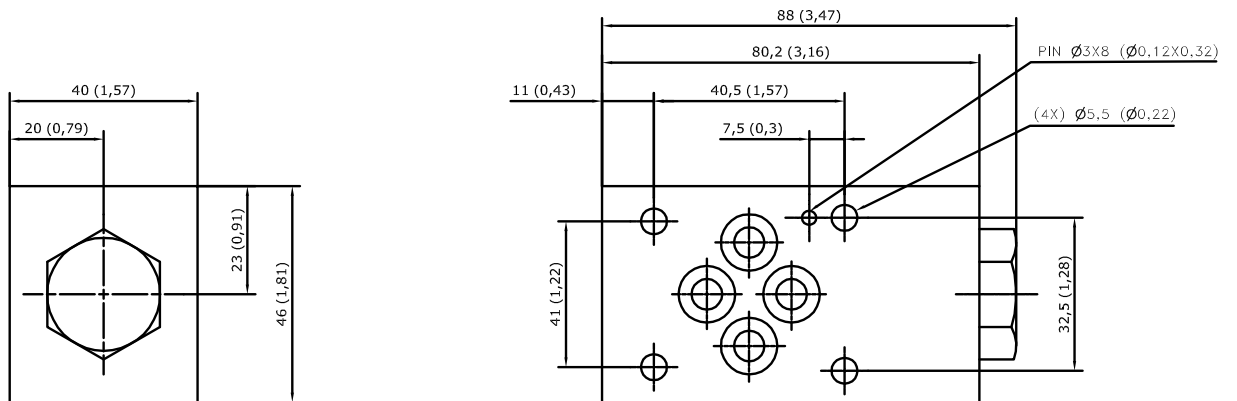
MC-02A

MC 02

MC-02A-**-20



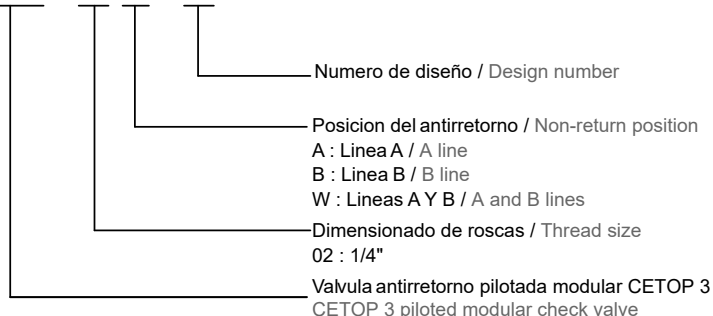
MC-02B-**-20



MPC 02



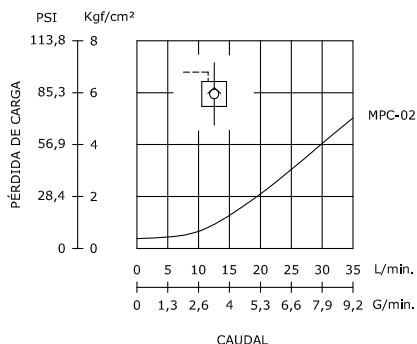
MPC - 02 W - 30



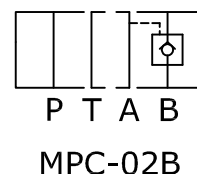
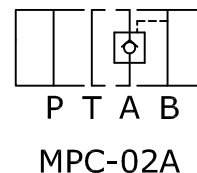
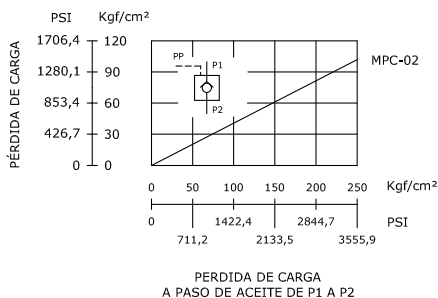
Datos Principales Main Data

Presion operativa maxima / Maximum working pressure: 250 kgf/cm³
Caudal Maximo / Max flow: 50LPM (13,1 GPM)

PERDIDA DE CARGA
A CAUDAL LIBRE

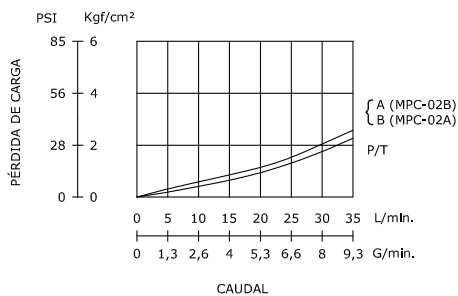


PILOTAJE MÍNIMO

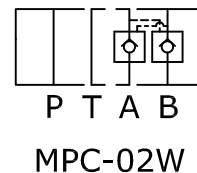
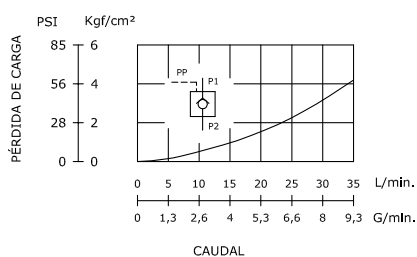


Viscosidad del aceite / Oil viscosity: 35 cst (175 ssu)
Temperatura / Temperature: 50° c (122° f)

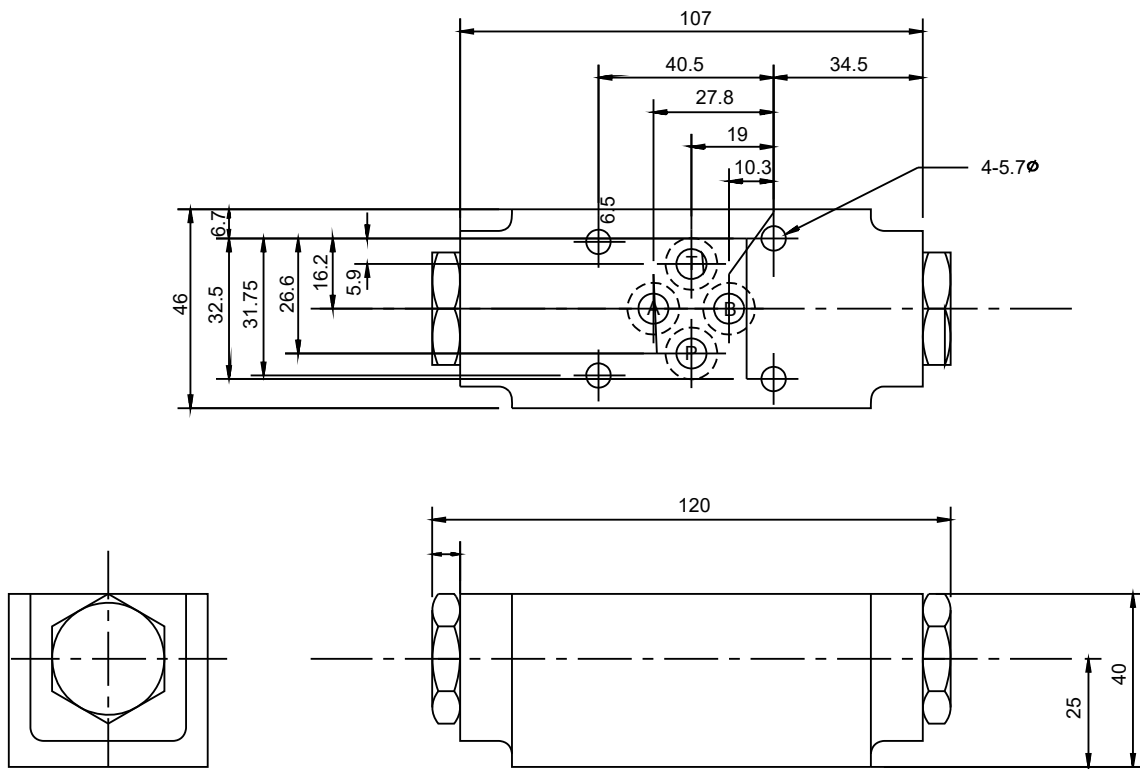
PERDIDA DE CARGA
A CAUDAL LIBRE



PERDIDA DE CARGA
A PASO DE ACEITE DE P1 A P2
CON PILOTAJE MÍNIMO



MPC 02



MSC 02



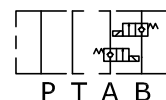
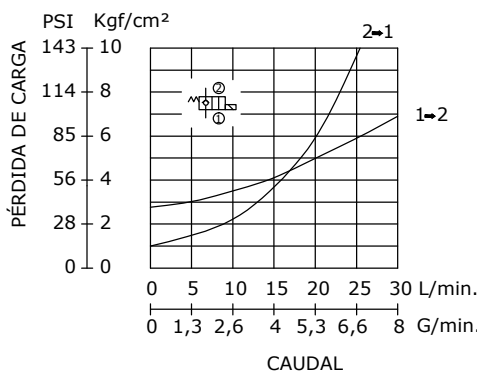
MSC - 02 W - 230 AP - NC - 10

- Opciones / Options
 - 10: Con emergencia manual / With manual emergency
 - 20: Sin emergencia man / Without manual emergency
- Configuracion / Configuration
 - NC: Normalmente cerrada / Normally closed
- Conexiones / Connections
 - AP: 1/2" conector AC / AC connector
 - DP: 1/2" conector dc / DC connector
 - AG: din AC
 - DG: din DC
- Gama de tensiones / Voltage range
 - 12 : 12VDC
 - 24 : 24VDC
 - 115 : 115VAC
 - 230 : 230VAC
- Posicion del antirretorno / Non-return position
 - W: Lineas A y B / A and B lines
 - A: Linea A / A line
 - B: Linea B / B line
- Dimensionado de roscas / Thread size
 - 02: 1/4"
- Valvula antirretorno modular electrica
Electric modular check valve

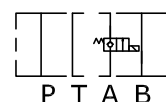
Datos Principales Main Data

Presion operativa maxima / Maximum working pressure: 250 kgf/cm³
Caudal Maximo / Max flow: 50LPM (13,1 GPM)

PÉRDIDA DE CARGA
A CAUDAL LIBRE



MSC-02W-***** -NC-



MSC-02A-***** -NC-

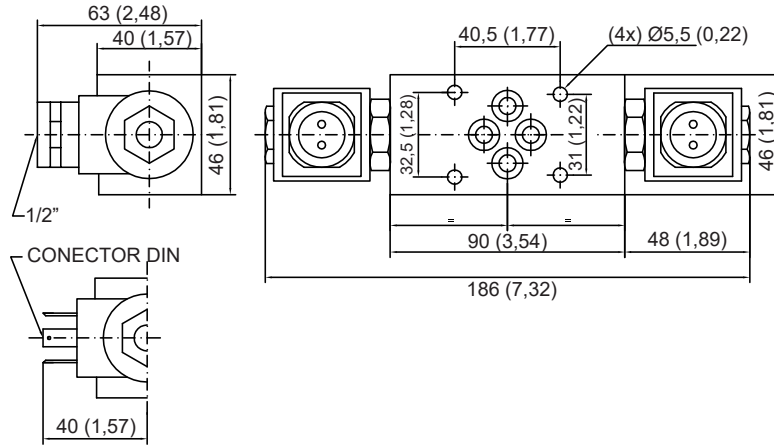


MSC-02B-***** -NC-

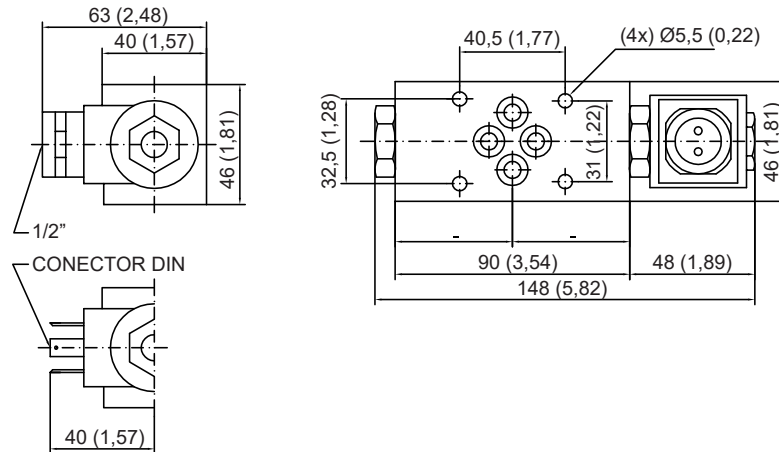
Viscosidad del aceite / Oil viscosity: 35 cst (175 ssu)
Temperatura / Temperature: 50° c (122° f)

MSC 02

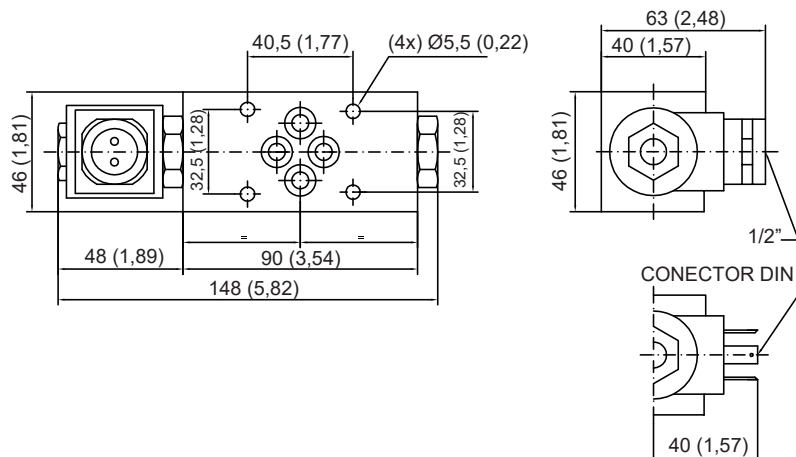
MSC-02W-*****_**_**

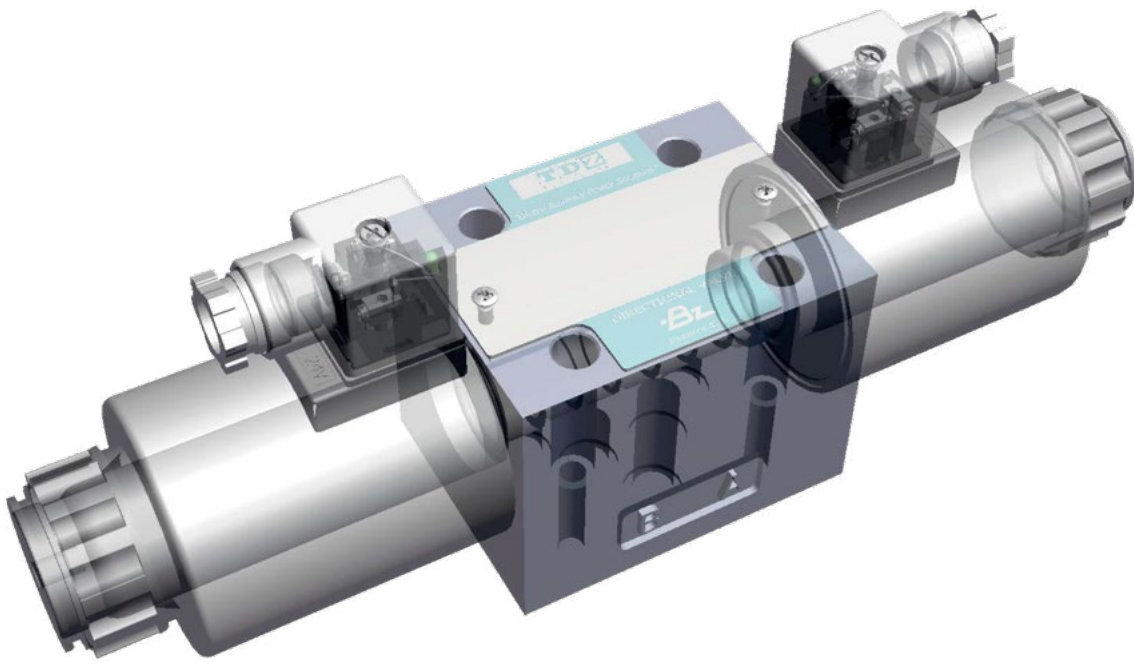


MSC-02A-*****_**_**



MSC-02B-*****_**_**



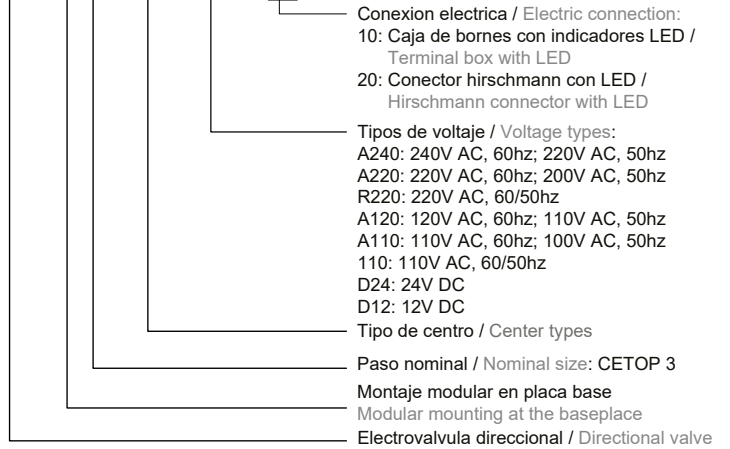


Indice / Contents

Válvulas CETOP 5 / CETOP 5 Valves.....			21
SWH G03.....	22	MT 03 A/B/W.....	30
MRF 03.....	24	MT 03 A/B/W.....	31
MRF 03.....	25	MC 03.....	32
MPR 03.....	26	MC 03.....	33
MPR 03.....	27	MSC 03.....	34
MT 03.....	28	MSC 03.....	35
MT 03.....	29		
Válvulas CETOP 7 / CETOP 7 Valves.....			37
SWH G04.....	38	MT 04 A/B/W.....	41
MPR 04.....	40	MPC 04.....	42
Válvulas CETOP 8 / CETOP 8 Valves.....			43
SWH G06.....	44	MT 06 A/B/W.....	47
MPR 06.....	46	MPC 06.....	48
Válvulas CETOP 10 / CETOP 10 Valves.....			49
SWH G10.....	50		

SWH G03

SWH - G03 - C2 - A220 - 10 - 45H



Datos Principales Main Data

Temp. de trab. / Working Temp: 5°C - 60°C
Visc. de aceite / Oil viscosity: 15 - 300 cst
Filtración / Filtering: 25 micras

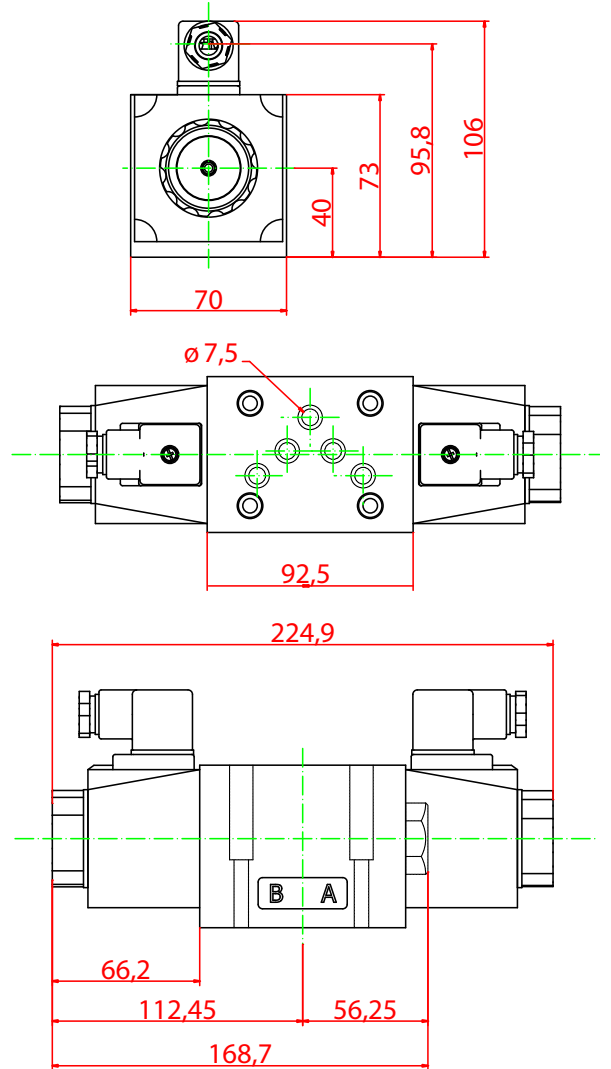
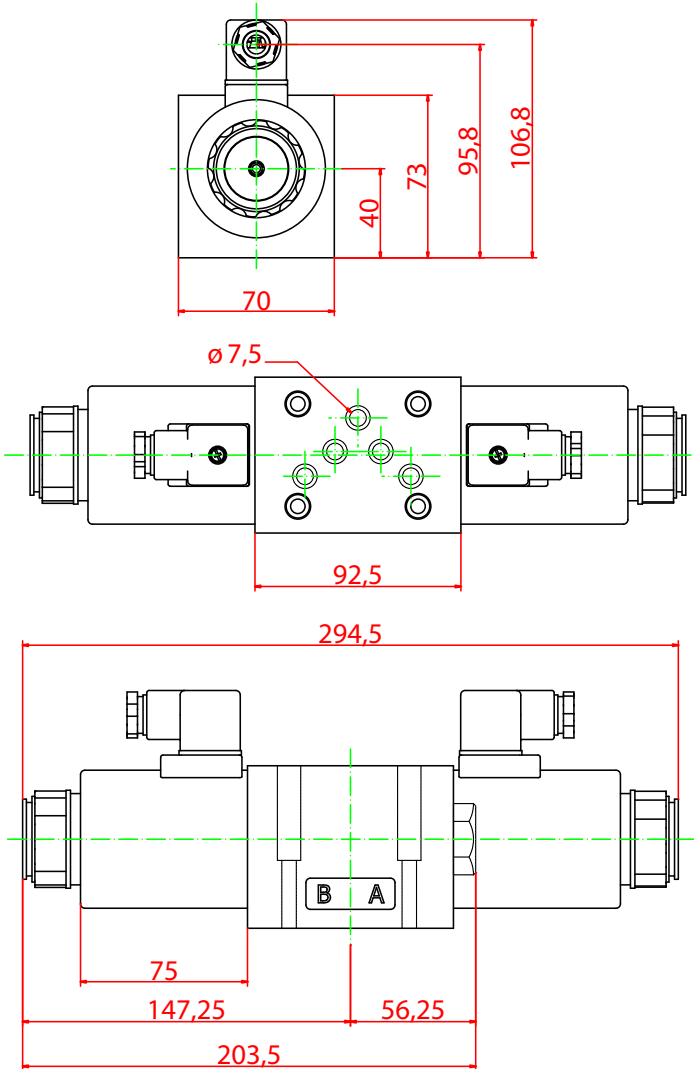
Éstandar Standard		Inversa Inverted	
Esquemas Schemes	Referencias P/N	Esquemas Schemes	Referencias P/N
	C2B		C2BS
	C3B		C3BS
	C4B		C4BS
	C40B		C40BS
	C5B		C5BS
	C6B		C6BS
	C9B		C9BS
	C10B		C10BS
	C11B		C11BS
	C12B		C12BS

	Esquemas Schemes	Referencias P/N	Caudal Máx. Max flow
2 posiciones centrada por muelle 2 positions spring-centered		SWH-G03-B2	120 l/min.
		SWH-G03-B3	
		SWH-G03-B20	
3 posiciones centrada por muelle 3 positions spring-centered		SWH-G03-C2	100 l/min.
		SWH-G03-C3	
		SWH-G03-C4	
		SWH-G03-C40	
		SWH-G03-C5	
		SWH-G03-C6	
		SWH-G03-C9	
2 posiciones con enclavamiento 2 position w/ interlocking		SWH-G03-C11	100 l/min.
		SWH-G03-C12	
		SWH-G03-D2	

SWH G03

DC

AC



*Las dimensiones pueden diferir de la pieza real

Especificaciones tecnicas Technical specifications

		AC	DC
Presión de trabajo (P/A/B) Work Pressure		315 bar	
Contrapresión máx. (T) Max. Counter pressure		160 bar	210 bar
Peso (Kg.) Weight	2 Solenoides 2 Solenoids	4,9	6
	1 Solenoide 1 Solenoid	3,5	4,3
Máximo nº de ciclos (x min.) Maximum cycles/minutes		120	250
Protección Protection		IP 69K	IP 65
T coil Max.		180°C (Class H)	135°C (Class B)

		AC				DC	
V		110	120	220	240	12	24
Hz		50	60	50	60	-	-
Consumo arranque Starting Current (A)		-	-	1,4	-	-	-
Consumo mantenido Holding Current (A)		-	-	0,42	-	-	-
W		-	-	-	-	36	36
V (Min-Max)		190 ~ 130		200 ~ 260		10,8-13,2	21,6-26,4

MRF 03

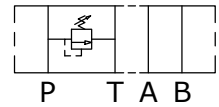


MRF - 03 P - K - 1 - 30

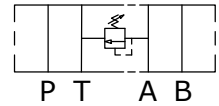
- Numero de diseño / Design Number
- Presion / Pressure
 - 1 : 8-70kgf/cm² (120-1000psi)
 - 2 : 35-140kgf/cm² (500-2000psi)
 - 3 : 70-210kgf/cm² (1000-3000psi)
- Mando de regulacion / Regulator
 - K : con pomo / knob
 - Sin codigo / No code: con tornillo / screw
- Control de presion / Pressure control
 - P : linea P / P line
 - A : linea A / A line
 - B : linea B / B line
 - C : lineas A y B (descarga a tanque) / A & B (Tank return)
 - D : lineas A y B cruzadas / A & B crossed lines
- Dimensionado de roscas / Thread size
 - 03 : 3/8"
- Limitadora de presion modular / Modular Relief Valve

Datos Principales Main Data

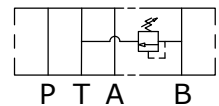
Presion operativa maxima / Maximum working pressure: 250 kgf/cm³
Caudal Maximo / Max flow: 50LPM (13,1 GPM)



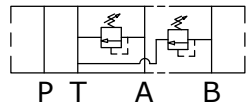
MRF-03P



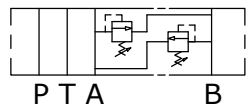
MRF-03A



MRF-03B



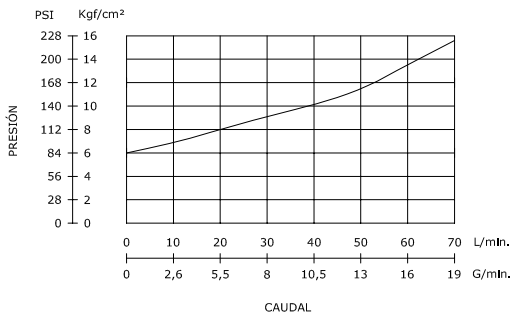
MRF-03C



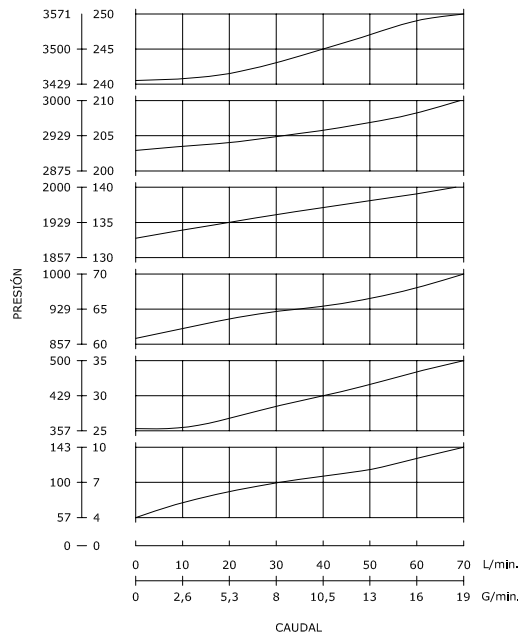
MRF-03D

Viscosidad del aceite / Oil viscosity: 35 cst (175 ssu)
Temperatura / Temperature: 50° c (122° f)

AJUSTE MÍNIMO DE PRESIÓN

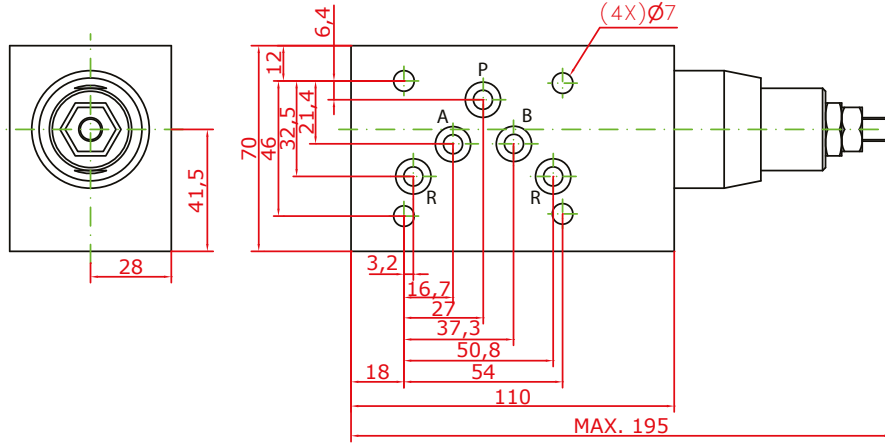


RENDIMIENTO STANDARD

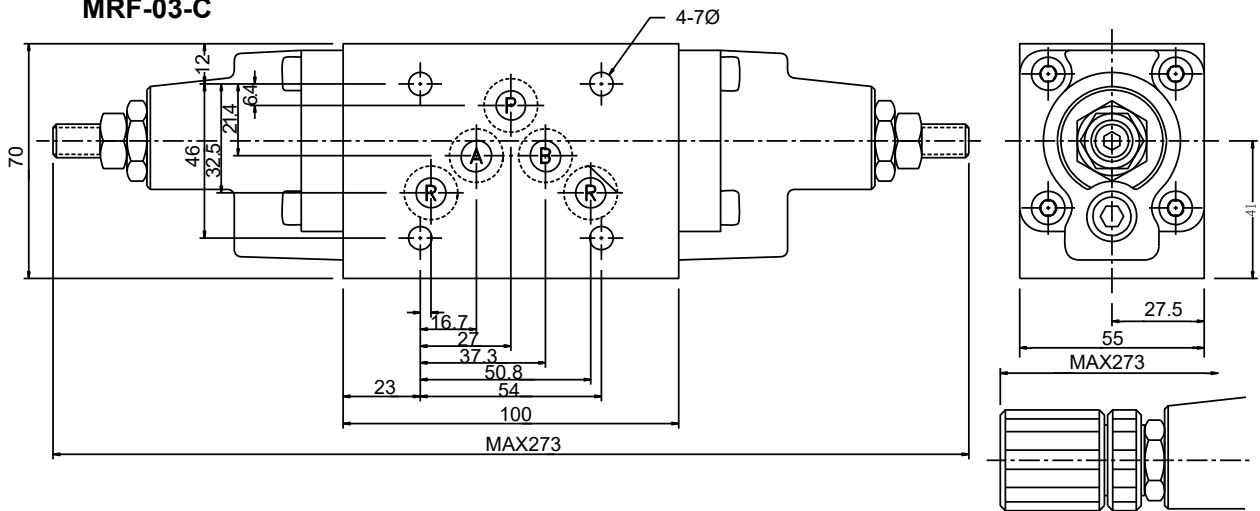


MRF 03

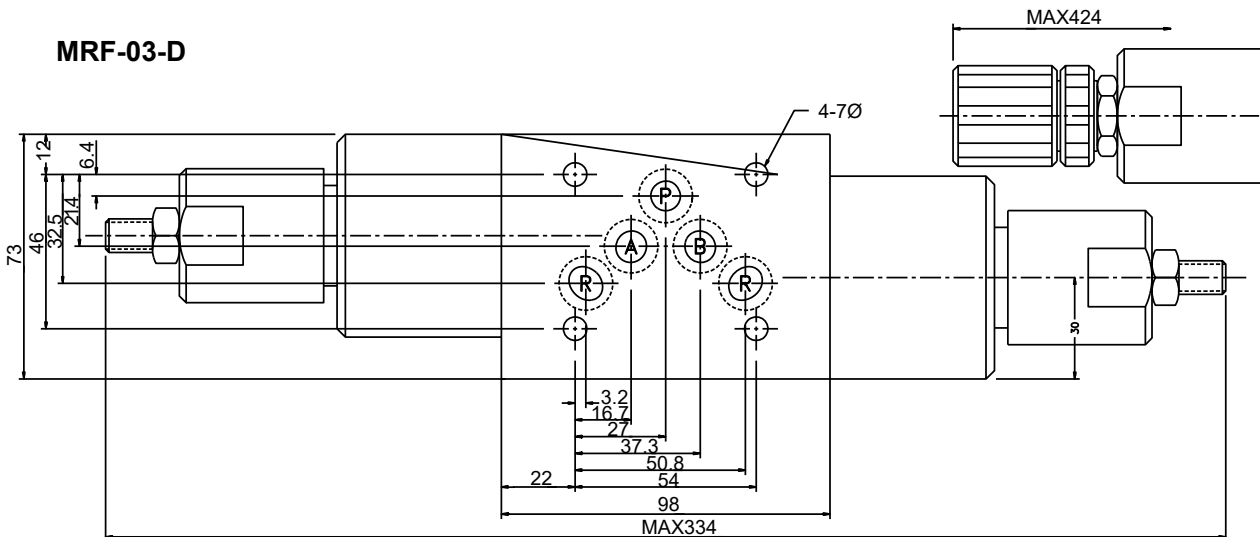
MRF-03-P



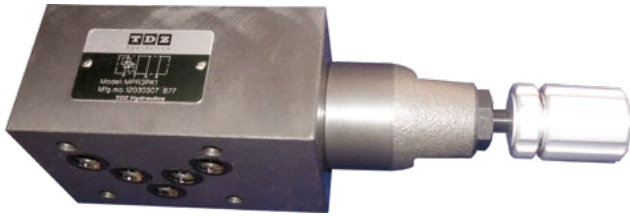
MRF-03-C



MRF-03-D



MPR 03



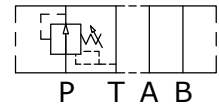
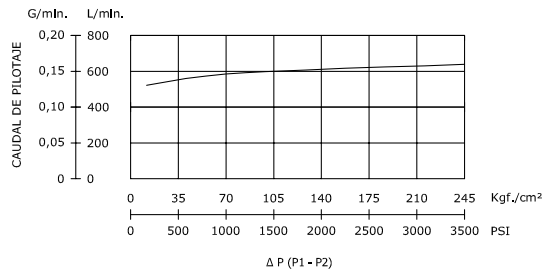
MPR - 03 P - K - 0 - 30 - N

- Sin código : con toma de manómetro rosca standard
Without code: with standard thread gauge
- Código N : con toma de manómetro rosca npt
N: with npt thread gauge
- Numero de diseño / Design number
- Rango de ajuste de presión / Pressure adjusting range
 - 0 : 3-35kgf/cm² (40-500PSI)
 - 1 : 8-70kgf/cm² (120-1000PSI)
 - 2 : 35-140kgf/cm² (500-2000PSI)
 - 3 : 70-210kgf/cm² (1000-3000PSI)
- Mando de regulación / Control knob
 - K: con pomo / with knob
 - Sin código: con tornillo de regulacion / No code: with adjusting screw
- Control de presión / Pressure control
 - P : Línea P / P Line
 - A : Línea A / A Line
 - B : Línea B / B Line
- Dimensionado de roscas / Thread size
03 : 3/8"
- Valvula reductora de presión modular
Modular pressure reducing valve

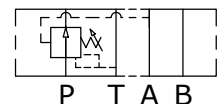
Datos Principales Main Data

Presión operativa máxima / Maximum working pressure: 250 kgf/cm³
Caudal Máximo / Max flow: 50LPM (13,1 GPM)

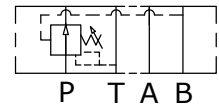
CAUDAL SEGUN PILOTAJE



P T A B
MPR-03P



P T A B
MPR-03A



P T A B
MPR-03B

Viscosidad del aceite / Oil viscosity: 35 cst (175 ssu)
Temperatura / Temperature: 50° c (122° f)

GRÁFICO DE PÉRDIDA DE CARGA
CON LA CORREDERA
COMPLETAMENTE ABIERTA

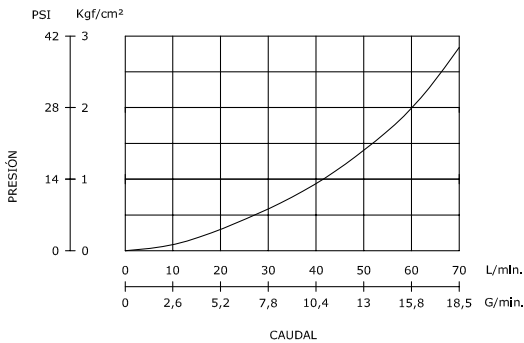
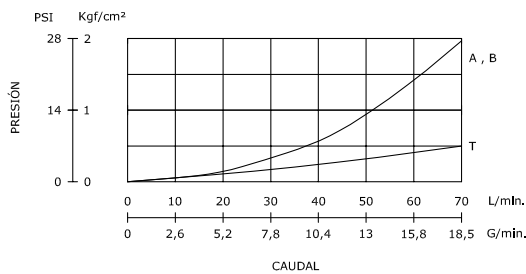
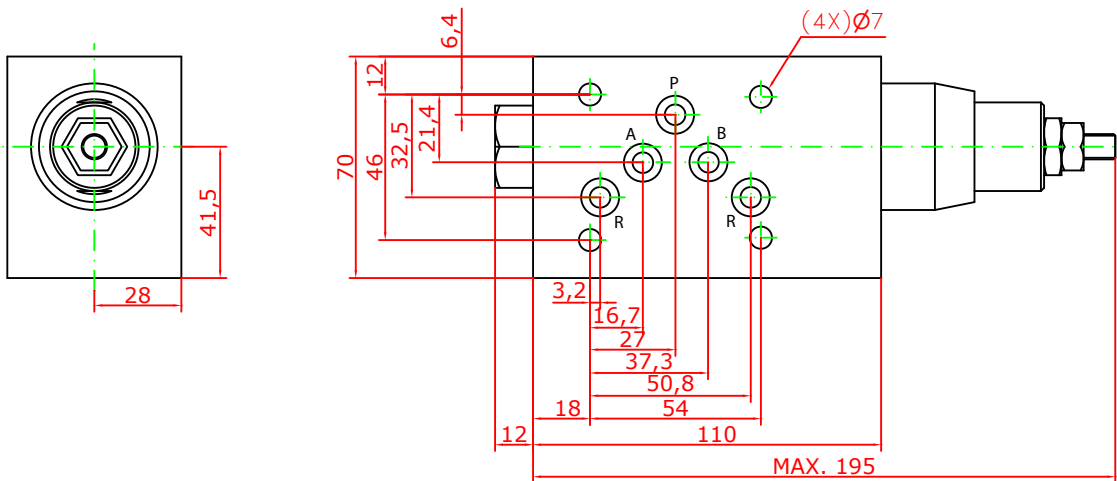


GRÁFICO DE PÉRDIDA DE CARGA



MPR 03

MRF-03-P



MT 03



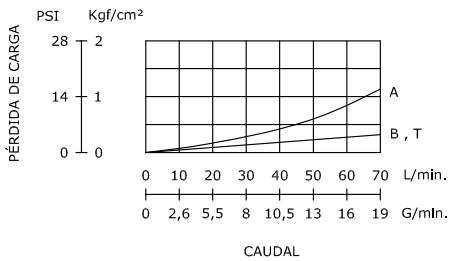
MT - 03 P - K - 30

- Numero de diseño / Design number
- Mando de regulacion / Control knob
K: con pomo / With knob
Sin codigo: con tornillo de regulacion / No code: with adjusting screw
- Control de presion / Pressure control
P : Linea P / P Line
T : Linea T / T Line
- Dimensionado de roscas / Thread size
03 : 3/8"
- Valvula reguladora bidireccional modular
Modular Bidirectional flow regulator

Datos Principales Main Data

Presion operativa maxima / Maximum working pressure: 250 kgf/cm³
Caudal Maximo / Max flow: 50LPM (13,1 GPM)

GRÁFICO DE PÉRDIDA DE CARGA



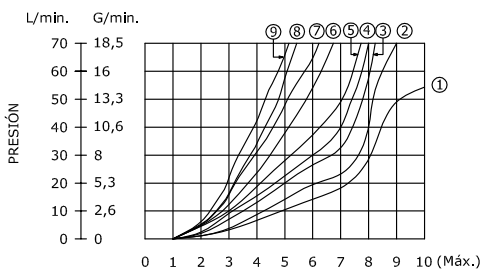
Viscosidad del aceite / Oil viscosity: 35 cst (175 ssu)
Temperatura / Temperature: 50° c (122° f)



P T A B

MT-03P

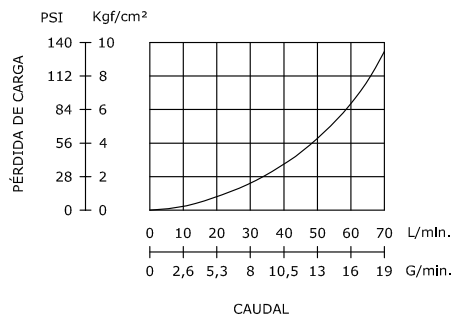
CAUDAL SEGUN REGULACIÓN DEL POMO



REGULACIÓN DEL POMO ($\Delta P = \text{Kg/cm}^2$)

- 1. $\Delta P = 5$
- 2. $\Delta P = 10$
- 3. $\Delta P = 20$
- 4. $\Delta P = 30$
- 5. $\Delta P = 50$
- 6. $\Delta P = 100$
- 7. $\Delta P = 140$
- 8. $\Delta P = 200$
- 9. $\Delta P = 250$

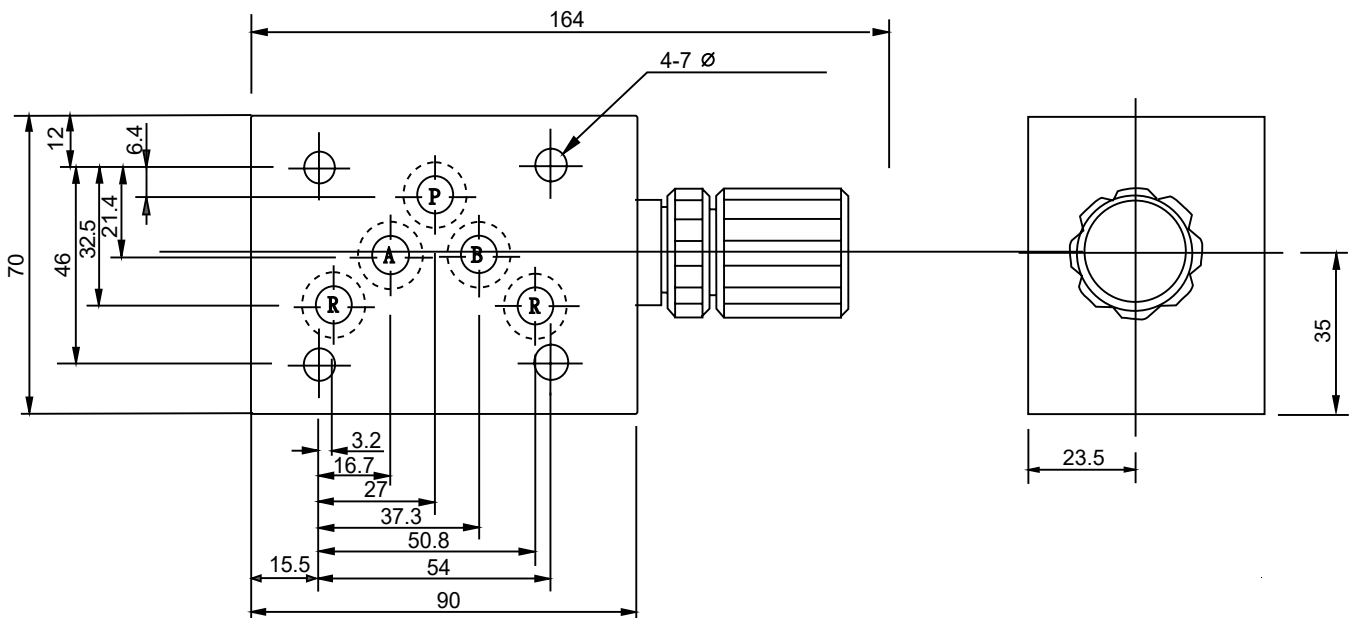
PÉRDIDA DE CARGA CON REGULADOR COMPLETAMENTE ABIERTO



P T A B

MT-03T

MT 03



MT 03 A/B/W



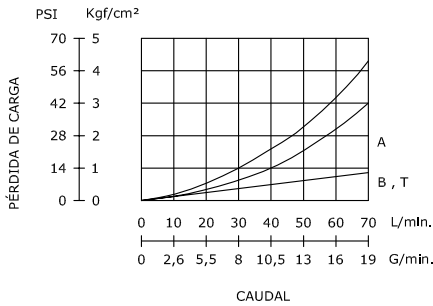
MT - 03 W - K - I - 30

- Numero de diseño / Design number
- Direccion de la regulacion del caudal / Flow regulation direction
I: en entrada / at input
Sin codigo: en salida / at output
- Mando de regulacion / Control knob
K: con pomo / with knob
Sin codigo: con tornillo de regulacion / No code: with adjusting screw
- Regulacion de caudal / Flow control
A : Linea A / A Line
B : Linea B / B Line
W : Lineas A Y B / A and B lines
- Dimensionado de roscas / Thread size
03 : 3/8"
- Valvula reguladora unidireccional modular
Modular unidirectional flow regulator

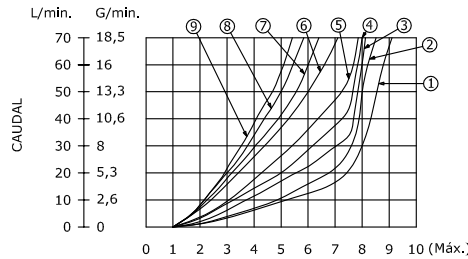
Datos Principales Main Data

Presion operativa maxima / Maximum working pressure: 250 kgf/cm³
Caudal Maximo / Max flow: 50LPM (13,1 GPM)

GRÁFICO DE PÉRDIDA DE CARGA



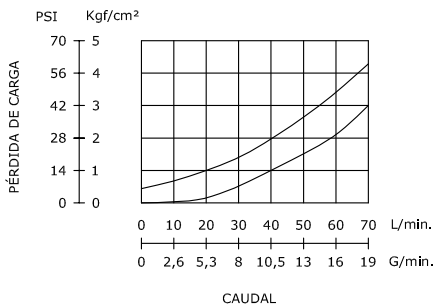
CAUDAL SEGUN REGULACIÓN DEL POMO



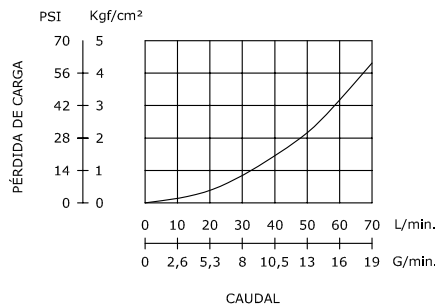
- REGULACIÓN DEL POMO
- 1. ΔP = 5
 - 2. ΔP = 10
 - 3. ΔP = 20
 - 4. ΔP = 30
 - 5. ΔP = 50
 - 6. ΔP = 100
 - 7. ΔP = 140
 - 8. ΔP = 200
 - 9. ΔP = 250

Viscosidad del aceite / Oil viscosity: 35 cst (175 ssu)
Temperatura / Temperature: 50° c (122° f)

PÉRDIDA DE CARGA CON PASO LIBRE



PÉRDIDA DE CARGA CON REGULADOR COMPLETAMENTE ABIERTO



P T A B

MT-03A



P T A B

MT-03A



P T A B

MT-03W



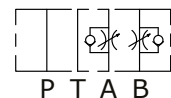
P T A B

MT-03A-I



P T A B

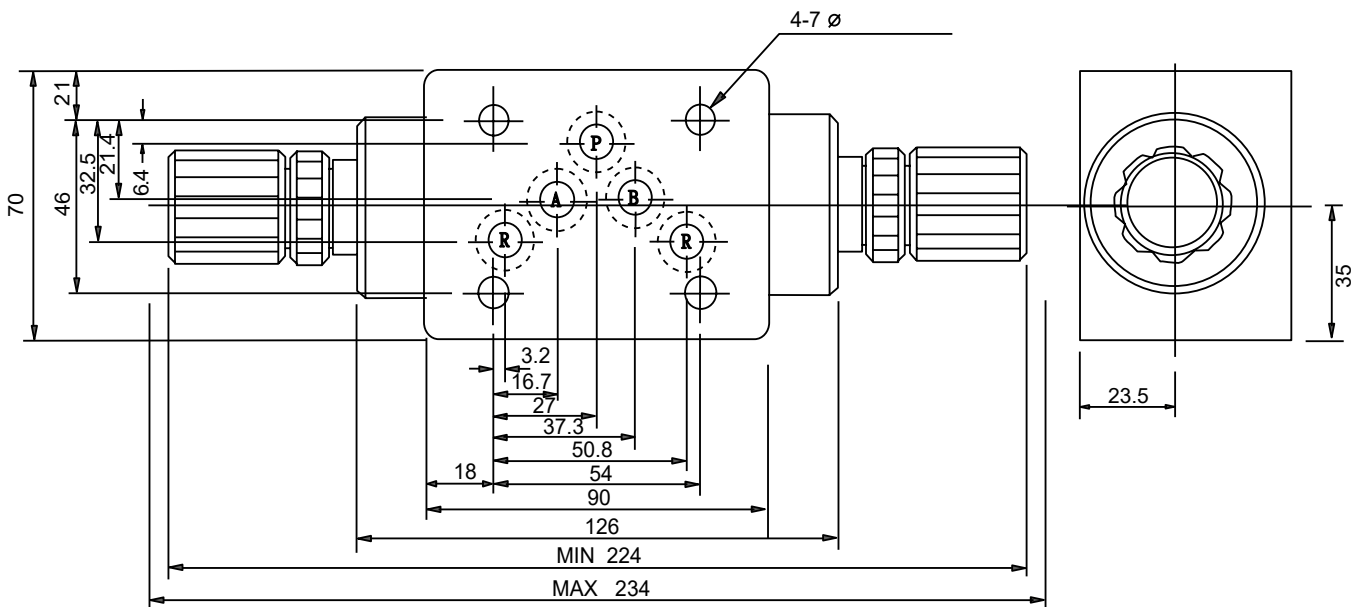
MT-03B-I



P T A B

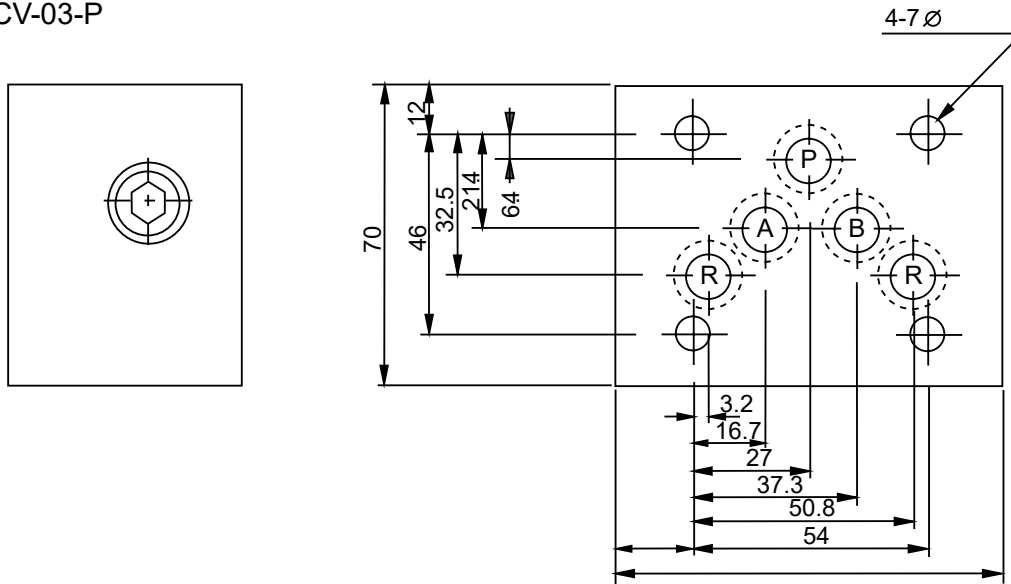
MT-03W-I

MT 03 A/B/W

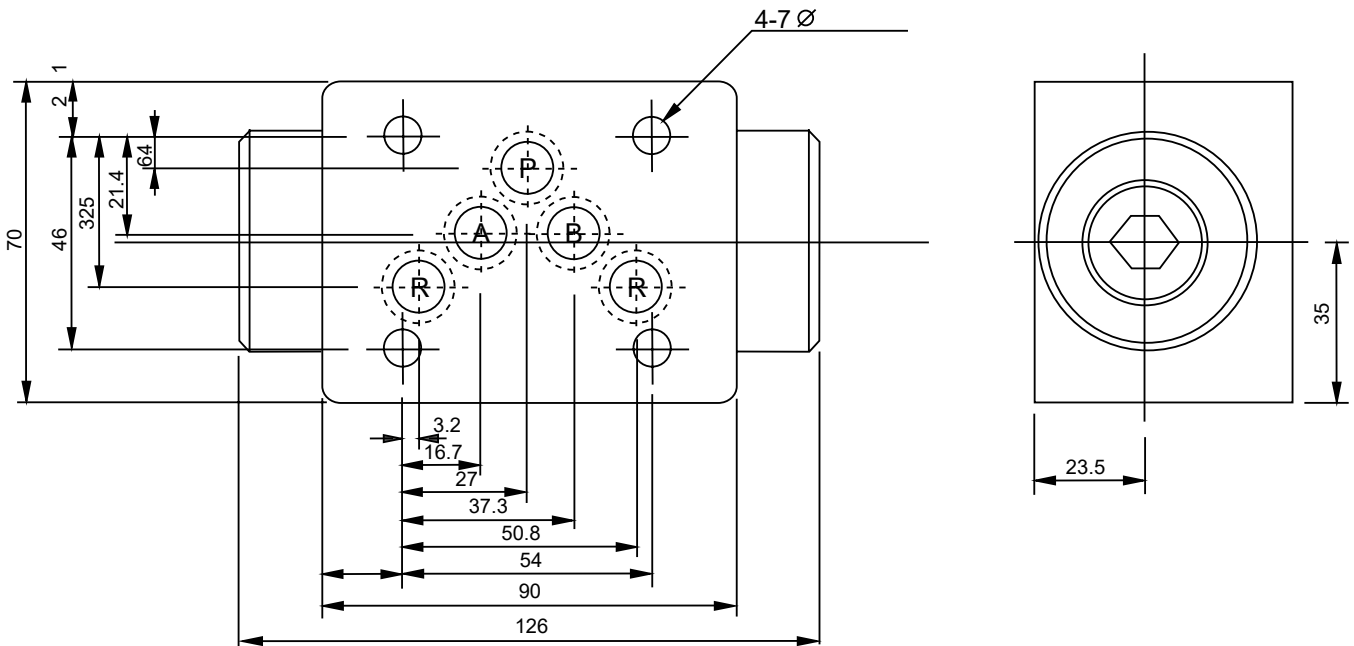


MC 03

MCV-03-P



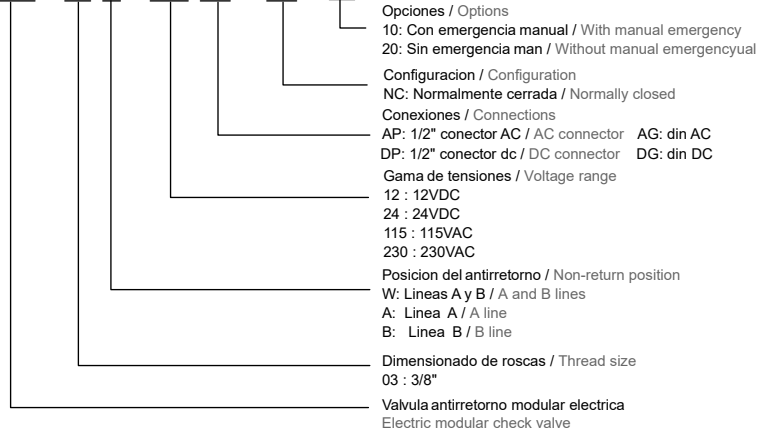
MCV-03-W.A.B



MSC 03

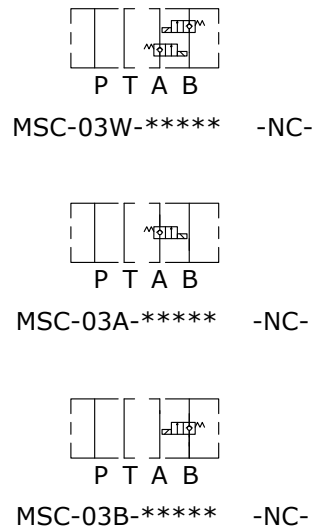
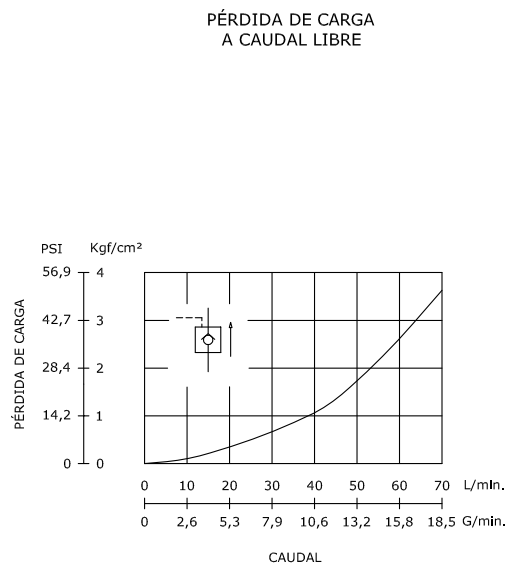
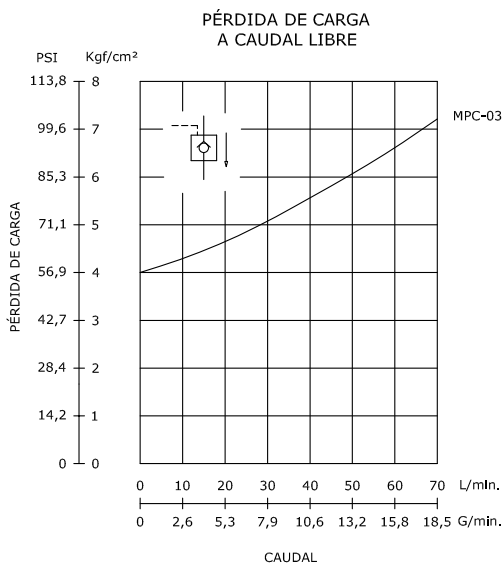


MSC - 03 W - 230 AP - NC - 10



Datos Principales Main Data

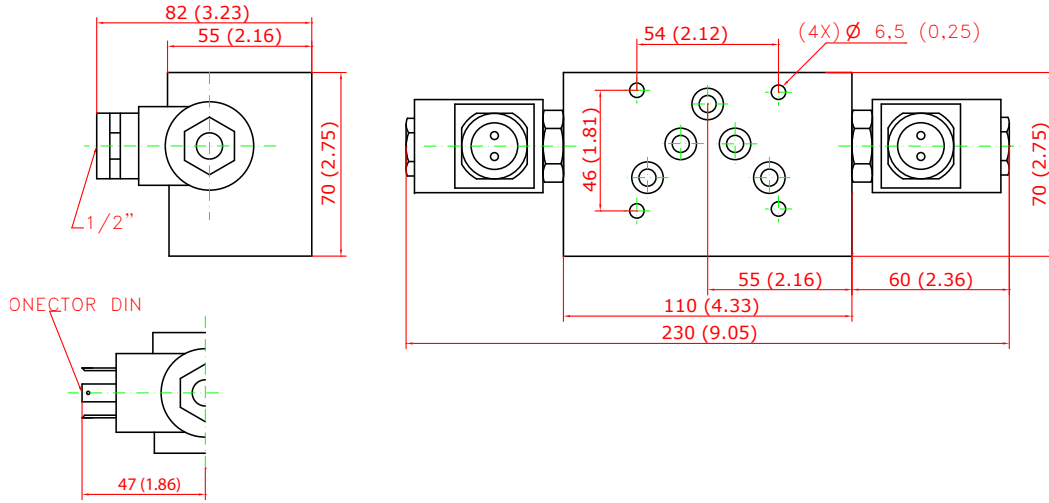
Presion operativa maxima / Maximum working pressure: 250 kgf/cm³
Caudal Maximo / Max flow: 50LPM (13,1 GPM)



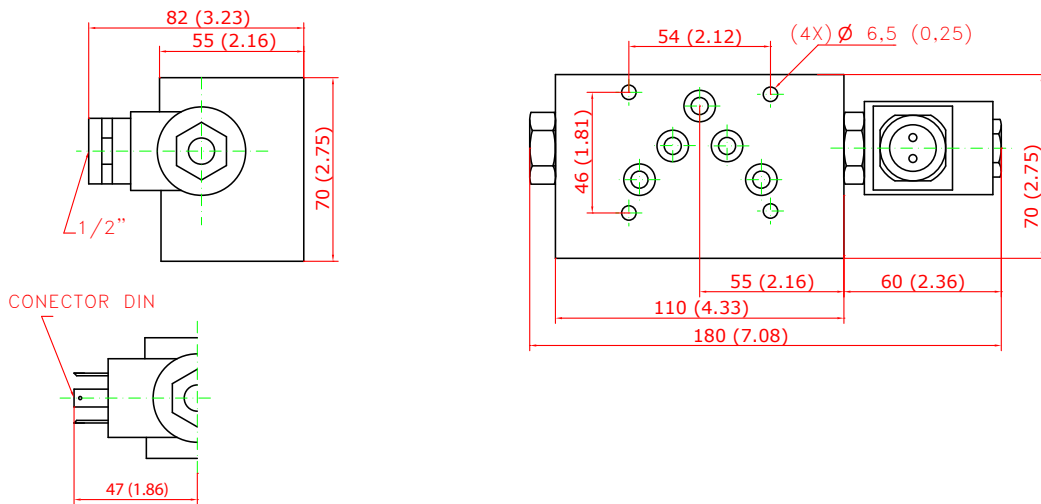
Viscosidad del aceite / Oil viscosity: 35 cst (175 ssu)
Temperatura / Temperature: 50° c (122° f)

MSC 03

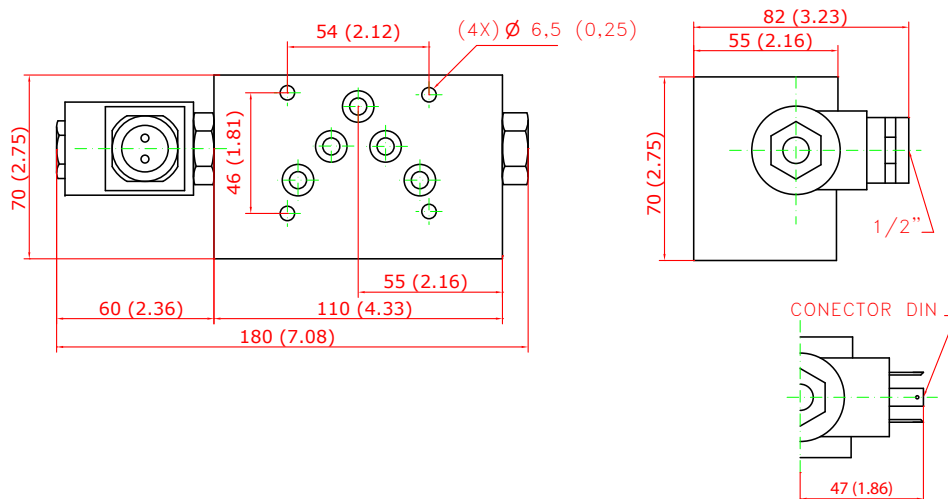
MSC-03W-*****_**_**

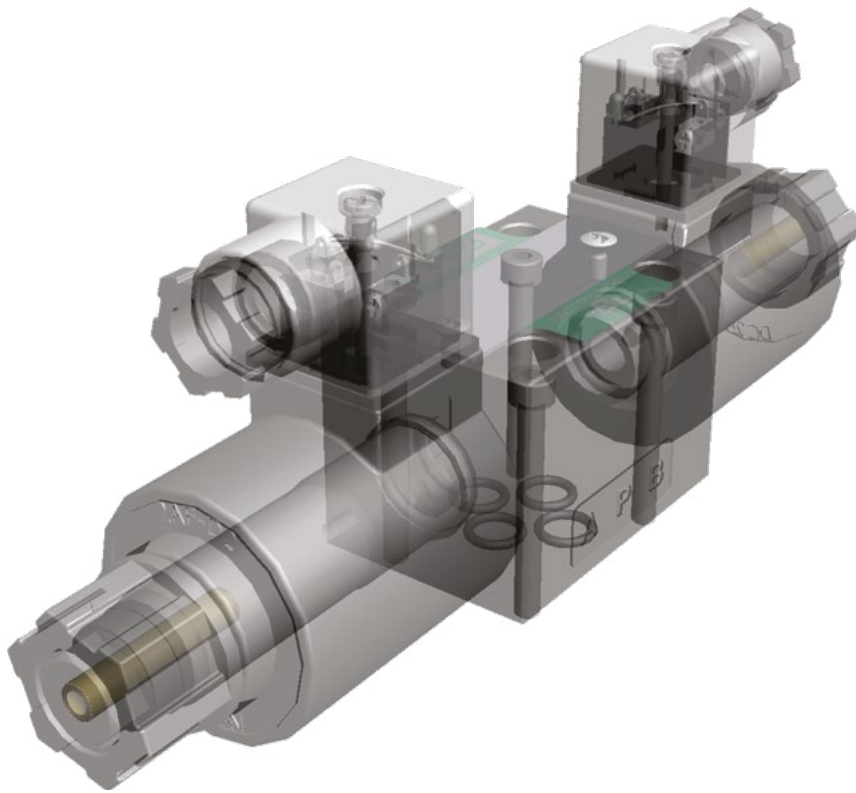


MSC-03A-*****_**_**



MSC-03B-*****_**_**

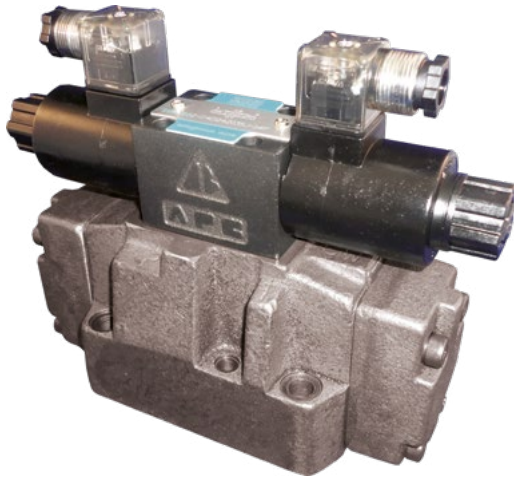




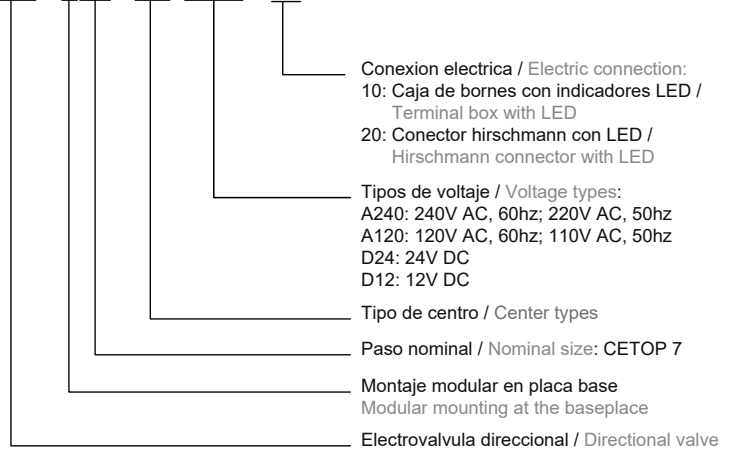
Indice / Contents

Válvulas CETOP 7 / CETOP 7 Valves.....			37
SWH G04.....	38	MT 04 A/B/W.....	41
MPR 04.....	40	MPC 04.....	42
Válvulas CETOP 8 / CETOP 8 Valves.....			43
SWH G06.....	44	MT 06 A/B/W.....	47
MPR 06.....	46	MPC 06.....	48
Válvulas CETOP 10 / CETOP 10 Valves.....			49
SWH G10.....	50		

SWH G04



SWH - G04 - C2 - A220 - 10 - 31J



Datos Principales Main Data

Temp. de trab. / Working Temp: 5°C - 60°C
 Visc. de aceite / Oil viscosity: 15 - 300 cst
 Filtración / Filtering: 25 micras

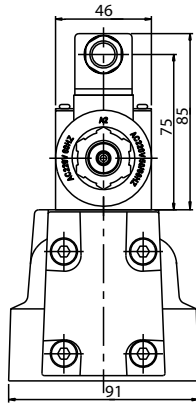
Presión de trabajo (P/A/B) / Work Pressure: 350 bar

Éstandar Standard		Inversa Inverted	
Esquemas Schemes	Referencias P/N	Esquemas Schemes	Referencias P/N
	C2B		C2BS
	C3B		C3BS
	C4B		C4BS
	C40B		C40BS
	C5B		C5BS
	C6B		C6BS

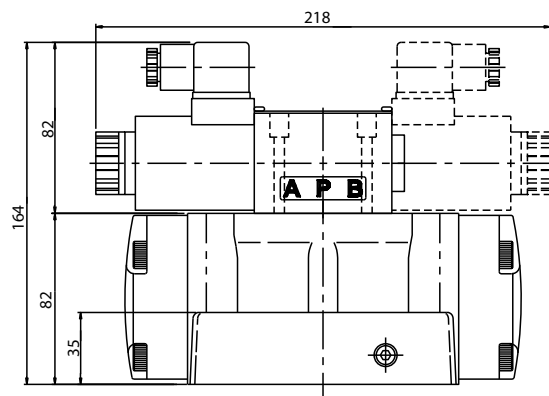
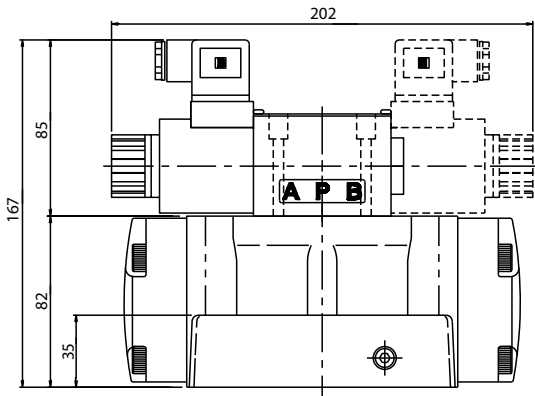
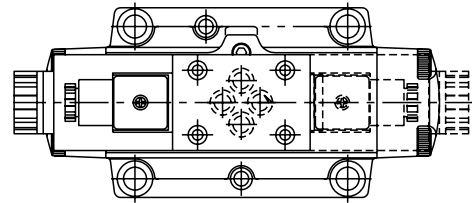
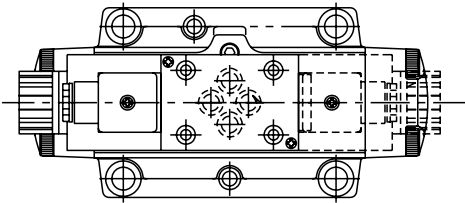
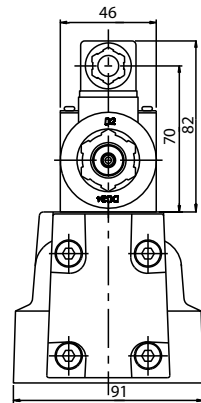
	Esquemas Schemes	Referencias P/N	Caudal Máx. Max flow
2 posiciones centrada por muelle		SWH-G04-B2	300
		SWH-G04-B3	
2 positions spring-centered		SWH-G04-B20	
3 posiciones centrada por muelle		SWH-G04-C2	
		SWH-G04-C3	
		SWH-G04-C4	
		SWH-G04-C40	
3 positions spring-centered		SWH-G04-C5	20 - 40
		SWH-G04-C6	

SWH G04

CON SOLENOIDES
AC (PILOTO)



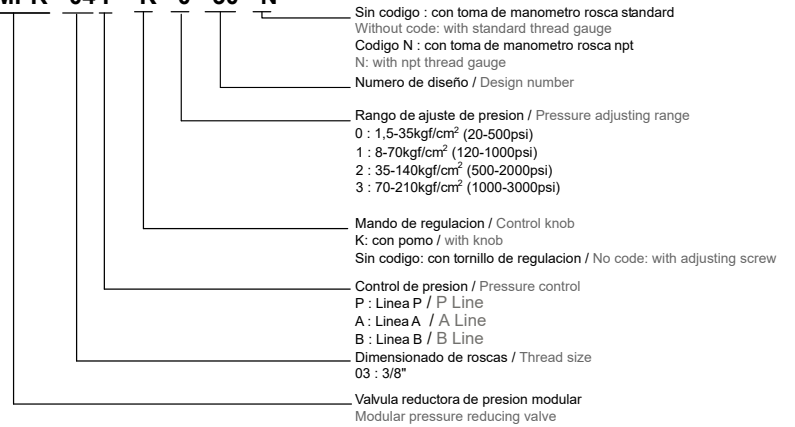
CON SOLENOIDES
DC (PILOTO)



MPR 04



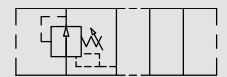
MPR - 04 P - K - 0 - 30 - N



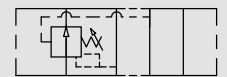
Datos Principales Main Data

Presión operativa máxima / Maximum working pressure: 250 kgf/cm³
Caudal Máximo / Max flow: 50LPM (13,1 GPM)

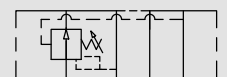
Viscosidad del aceite / Oil viscosity: 35 cst (175 ssu)
Temperatura / Temperature: 50° c (122° f)



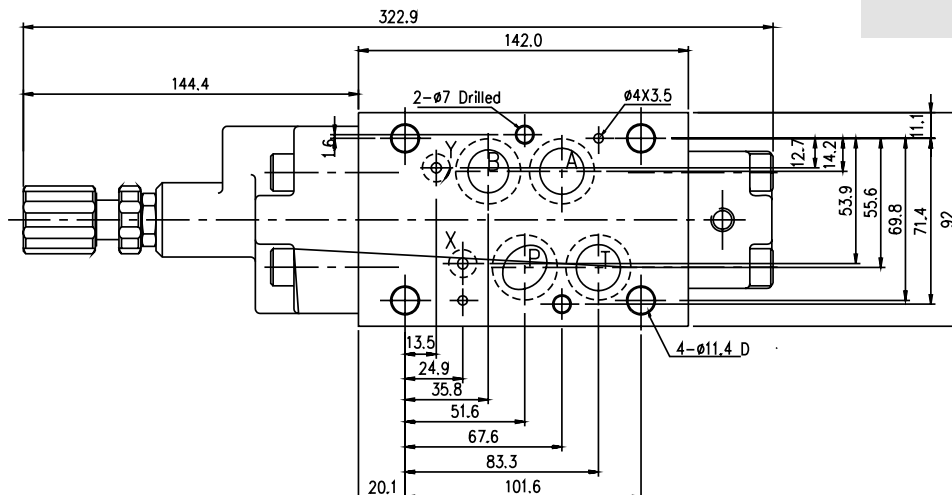
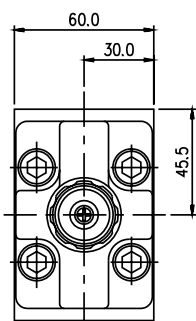
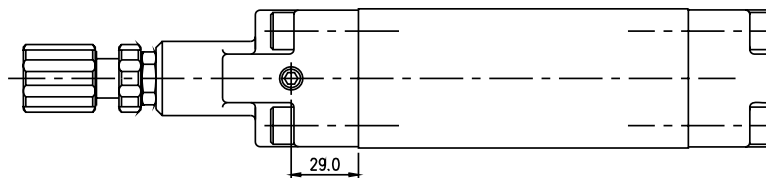
P T A B
MPR-04P



P T A B
MPR-04A



P T A B
MPR-04B



MT 04 A/B/W



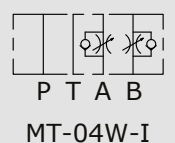
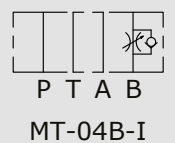
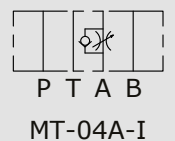
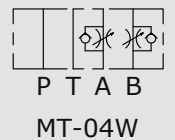
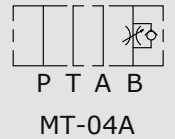
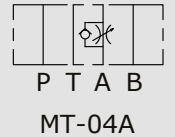
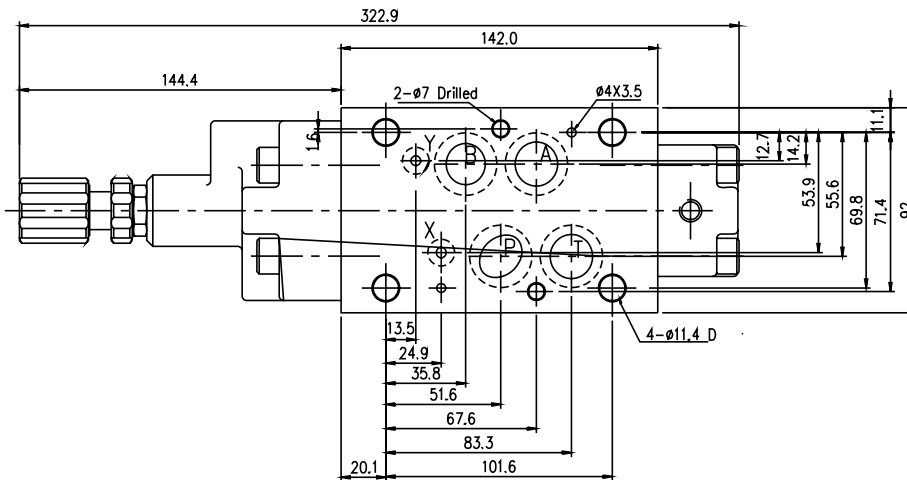
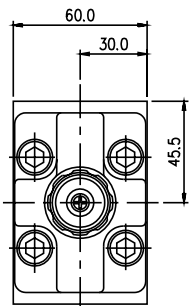
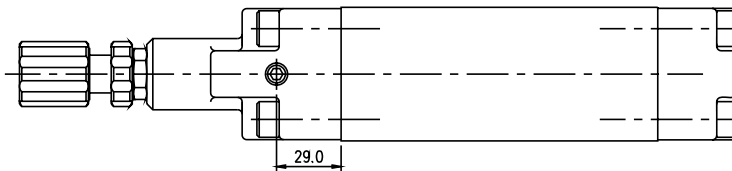
MT - 04 W - K - I - 30

- Numero de diseo / Design number
- Direccion de la regulacion del caudal / Flow regulation direction
I: en entrada / at input
Sin codigo: en salida / at output
- Mando de regulacion / Control knob
K: con pomo / with knob
Sin codigo: con tornillo de regulacion / No code: with adjusting screw
- Regulacion de caudal / Flow control
A : Linea A / A Line
B : Linea B / B Line
W : Lineas A Y B / A and B lines
- Dimensionado de roscas / Thread size
04 : 1/2"
- Valvula reguladora unidireccional modular
Modular unidirectional flow regulator

Datos Principales Main Data

Presion operativa maxima / Maximum working pressure: 250 kgf/cm³
Caudal Maximo / Max flow: 50LPM (13,1 GPM)

Viscosidad del aceite / Oil viscosity: 35 cst (175 ssu)
Temperatura / Temperature: 50° c (122° f)



MPC 04



MPC - 04 W - 30

- Numero de diseño / Design number
- Posicion del antirretorno / Non-return position
A : Linea A / A line
B : Linea B / B line
W : Lineas A Y B / A and B lines
- Dimensionado de roscas / Thread size
04 : 1/2"
- Valvula antirretorno pilotada modular CETOP 3
CETOP 3 piloted modular check valve

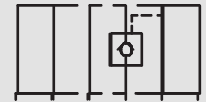
Datos Principales Main Data

Presion operativa maxima / Maximum working pressure: 250 kgf/cm³
Caudal Maximo / Max flow: 50LPM (13,1 GPM)

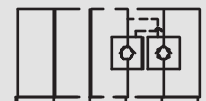
Viscosidad del aceite / Oil viscosity: 35 cst (175 ssu)
Temperatura / Temperature: 50° c (122° f)



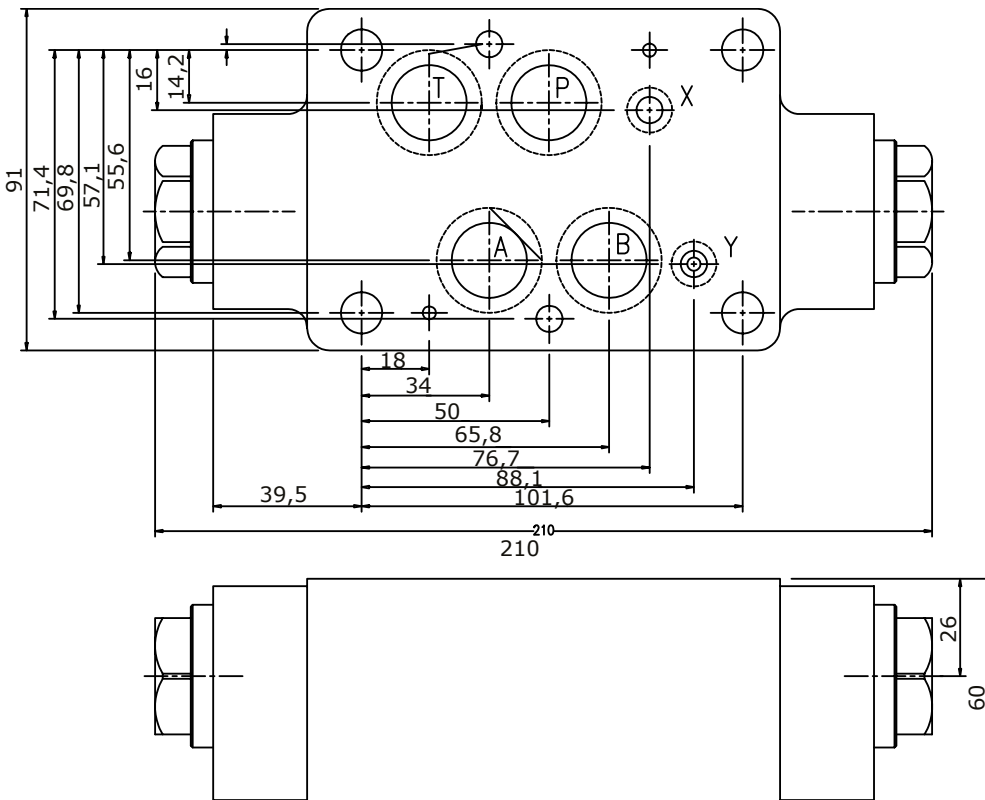
P T B A
MPC-04A

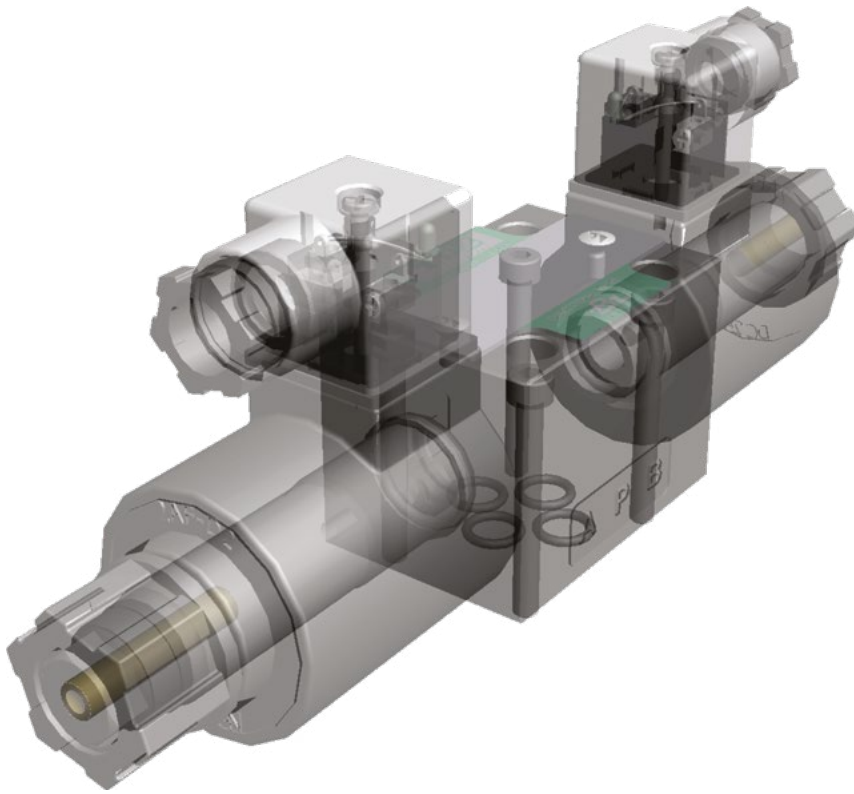


P T B A
MPC-04B



P T B A
MPC-04W

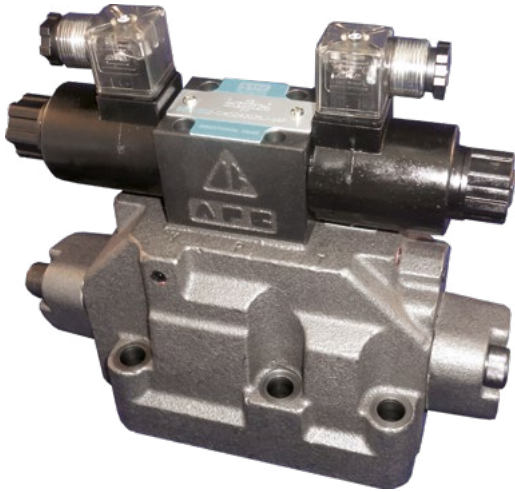




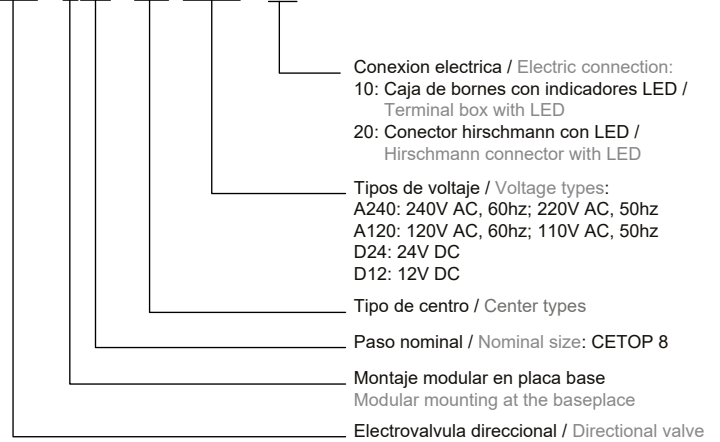
Indice / Contents

Válvulas CETOP 8 / CETOP 8 Valves.....			43
SWH G06.....	44	MT 06 A/B/W.....	47
MPR 06.....	46	MPC 06.....	48
Válvulas CETOP 10 / CETOP 10 Valves.....			49
SWH G10.....	50		

SWH G06



SWH - G06 - C2 - A220 - 10 - 31J



Datos Principales Main Data

Temp. de trab. / Working Temp: 5°C - 60°C
Visc. de aceite / Oil viscosity: 15 - 300 cst
Filtración / Filtering: 25 micras

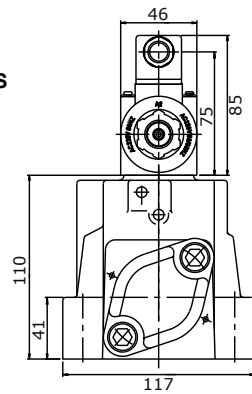
Presión de trabajo (P/A/B) / Work Pressure: 315 bar

Éstandar / Standard		Inversa / Inverted	
Esquemas / Schemes	Referencias / P/N	Esquemas / Schemes	Referencias / P/N
	C2B		C2BS
	C3B		C3BS
	C4B		C4BS
	C40B		C40BS
	C5B		C5BS
	C6B		C6BS

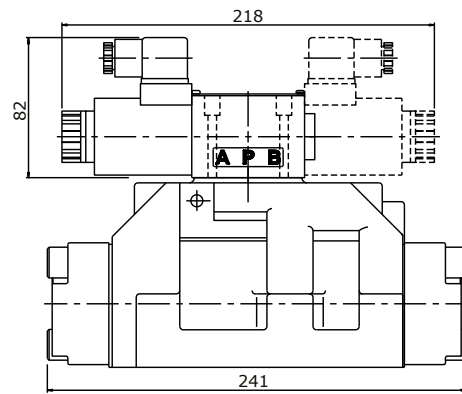
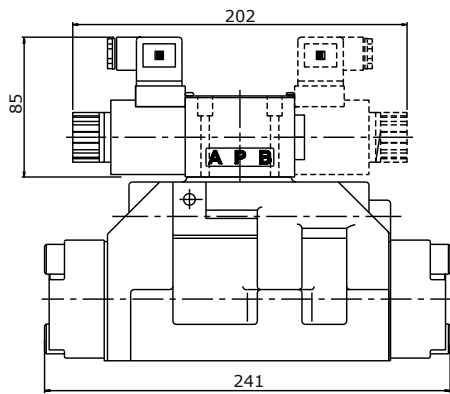
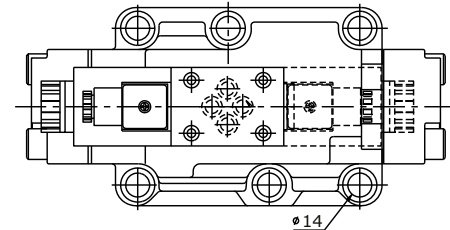
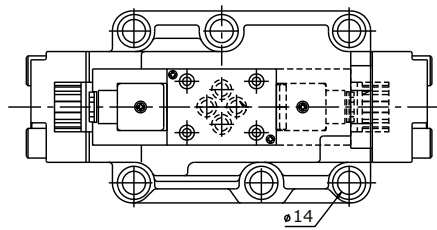
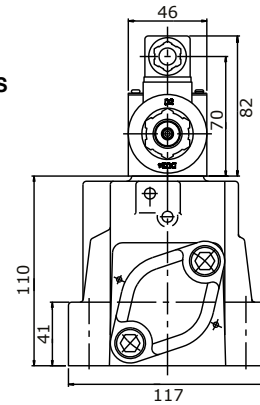
	Esquemas / Schemes	Referencias / P/N	Caudal Máx. / Max flow
2 posiciones centrada por muelle / 2 positions spring-centered		SWH-G06-B2	30 - 63
		SWH-G06-B3	
3 posiciones centrada por muelle / 3 positions spring-centered		SWH-G06-B20	
		SWH-G06-C2	
3 posiciones centrada por muelle / 3 positions spring-centered		SWH-G06-C3	
		SWH-G06-C4	
		SWH-G06-C40	
		SWH-G06-C5	20 - 40
	SWH-G06-C6		

SWH G06

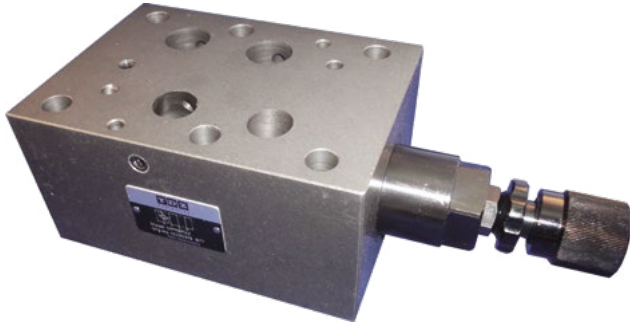
CON SOLENOIDES
AC (PILOTO)



CON SOLENOIDES
DC (PILOTO)



MPR 06



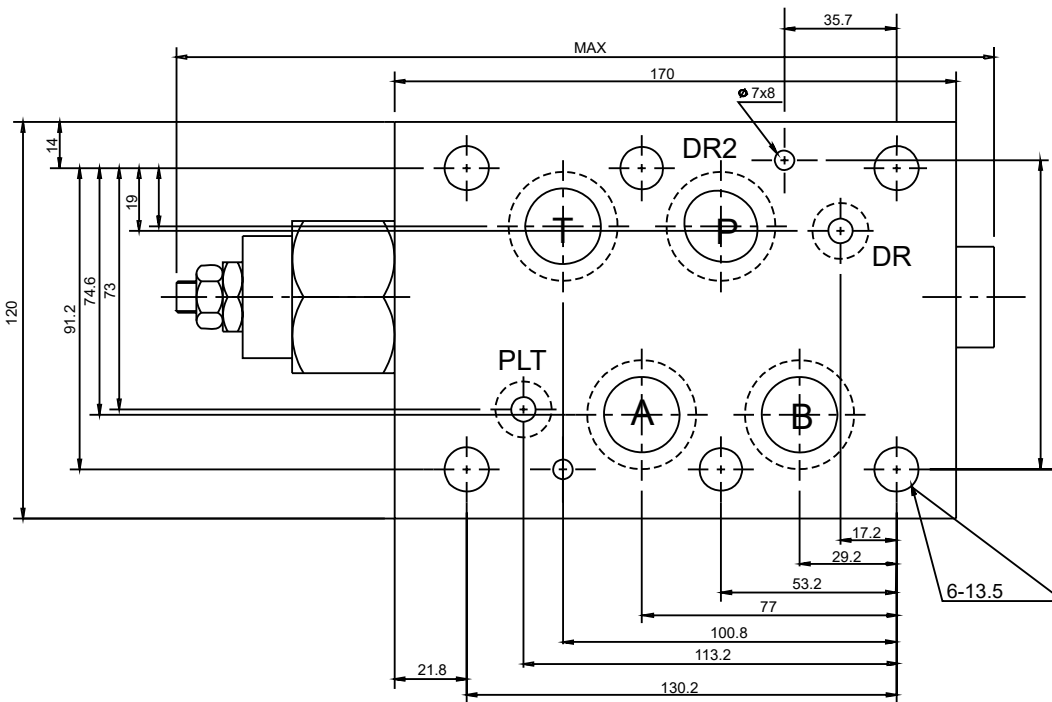
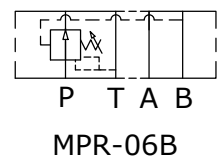
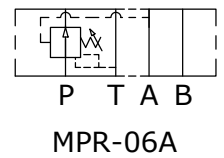
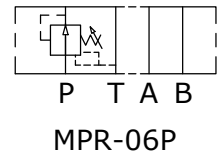
MPR - 06 P - K - 0 - 30 - N

- Sin código : con toma de manómetro rosca standard
Without code: with standard thread gauge
- Código N : con toma de manómetro rosca npt
N: with npt thread gauge
- Numero de diseño / Design number
- Rango de ajuste de presión / Pressure adjusting range
 - 0 : 1,5-35kgf/cm² (20-500psi)
 - 1 : 8-70kgf/cm² (120-1000psi)
 - 2 : 35-140kgf/cm² (500-2000psi)
 - 3 : 70-210kgf/cm² (1000-3000psi)
- Mando de regulación / Control knob
 - K: con pomo / with knob
 - Sin código: con tornillo de regulación / No code: with adjusting screw
- Control de presión / Pressure control
 - P : Línea P / P Line
 - A : Línea A / A Line
 - B : Línea B / B Line
- Dimensionado de roscas / Thread size
06 : 3/4"
- Valvula reductora de presión modular
Modular pressure reducing valve

Datos Principales Main Data

Presión operativa máxima / Maximum working pressure: 250 kgf/cm³
Caudal Máximo / Max flow: 50LPM (13,1 GPM)

Viscosidad del aceite / Oil viscosity: 35 cst (175 ssu)
Temperatura / Temperature: 50° c (122° f)



MT 06 A/B/W



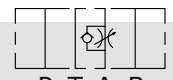
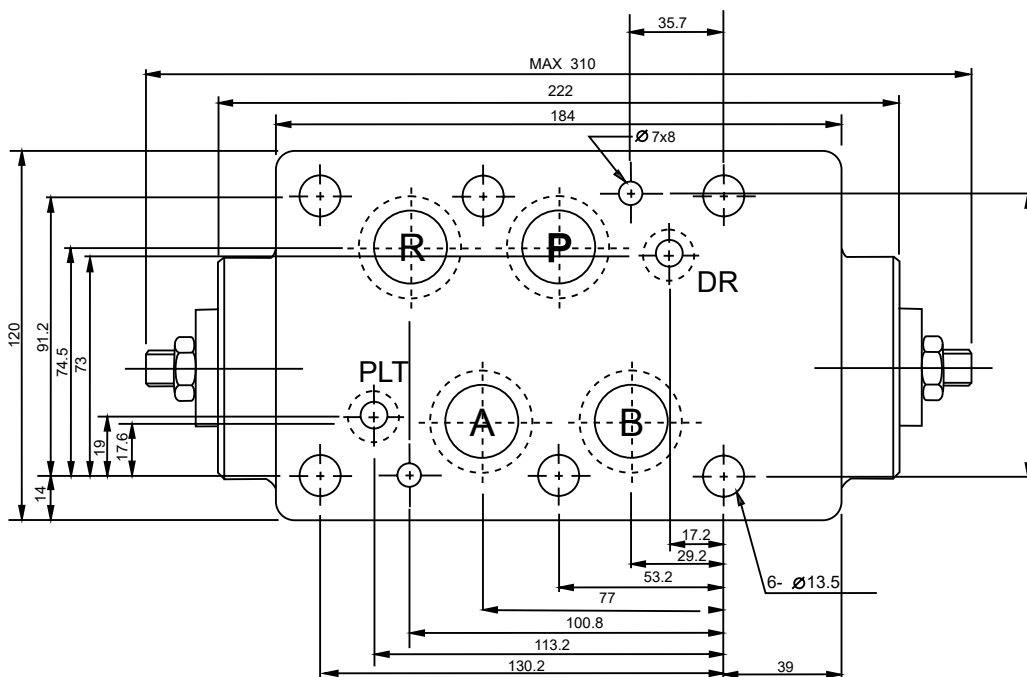
MT - 06 W - K - I - 30

- Numero de diseño / Design number
- Direccion de la regulacion del caudal / Flow regulation direction
I: en entrada / at input
Sin codigo: en salida / at output
- Mando de regulacion / Control knob
K: con pomo / with knob
Sin codigo: con tornillo de regulacion / No code: with adjusting screw
- Regulacion de caudal / Flow control
A: Linea A / A Line
B: Linea B / B Line
W: Lineas A Y B / A and B lines
- Dimensionado de roscas / Thread size
06 : 3/4"
- Valvula reguladora unidireccional modular
Modular unidirectional flow regulator

Datos Principales Main Data

Presion operativa maxima / Maximum working pressure: 250 kgf/cm³
Caudal Maximo / Max flow: 50LPM (13,1 GPM)

Viscosidad del aceite / Oil viscosity: 35 cst (175 ssu)
Temperatura / Temperature: 50° c (122° f)



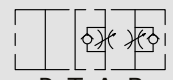
P T A B

MT-06A



P T A B

MT-06A



P T A B

MT-06W



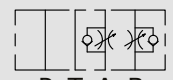
P T A B

MT-06A-I



P T A B

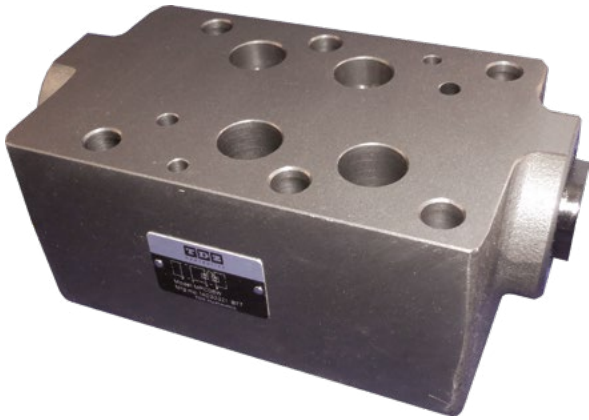
MT-06B-I



P T A B

MT-06W-I

MPC 06



MPC - 06 W - 30

Numero de diseño / Design number

Posicion del antirretorno / Non-return position

A : Linea A / A line

B : Linea B / B line

W : Lineas A Y B / A and B lines

Dimensionado de roscas / Thread size

06 : 3/4"

Valvula antirretorno pilotada modular CETOP 3
CETOP 3 piloted modular check valve

Datos Principales Main Data

Presion operativa maxima / Maximum working pressure: 250 kgf/cm³

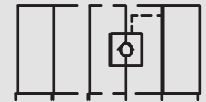
Caudal Maximo / Max flow: 50LPM (13,1 GPM)

Viscosidad del aceite / Oil viscosity: 35 cst (175 ssu)
Temperatura / Temperature: 50° c (122° f)



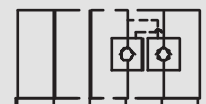
P T B A

MPC-06A



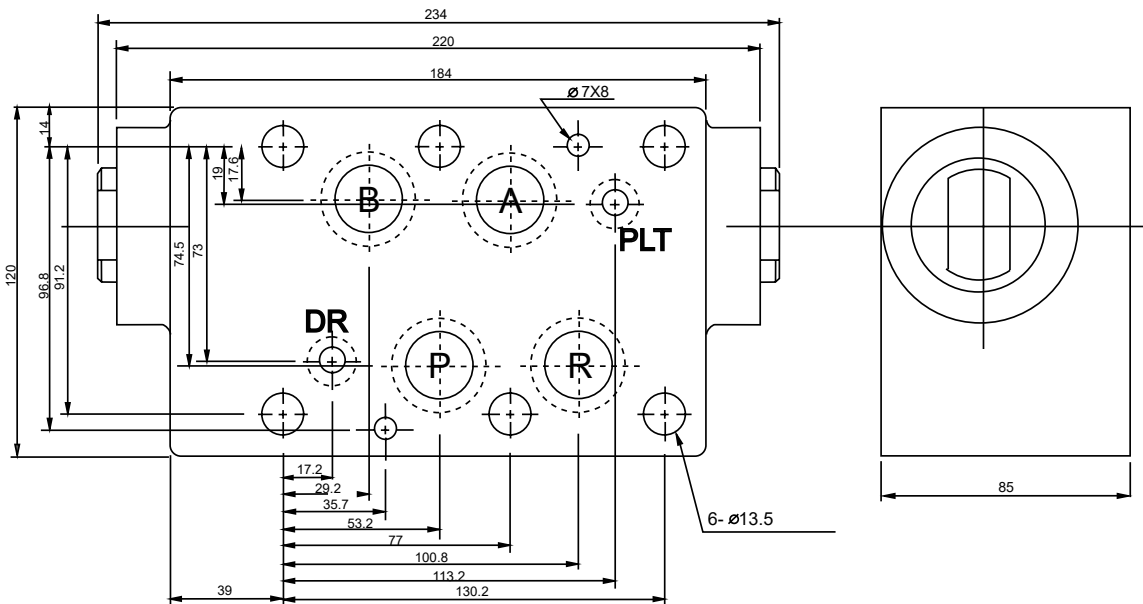
P T B A

MPC-06B



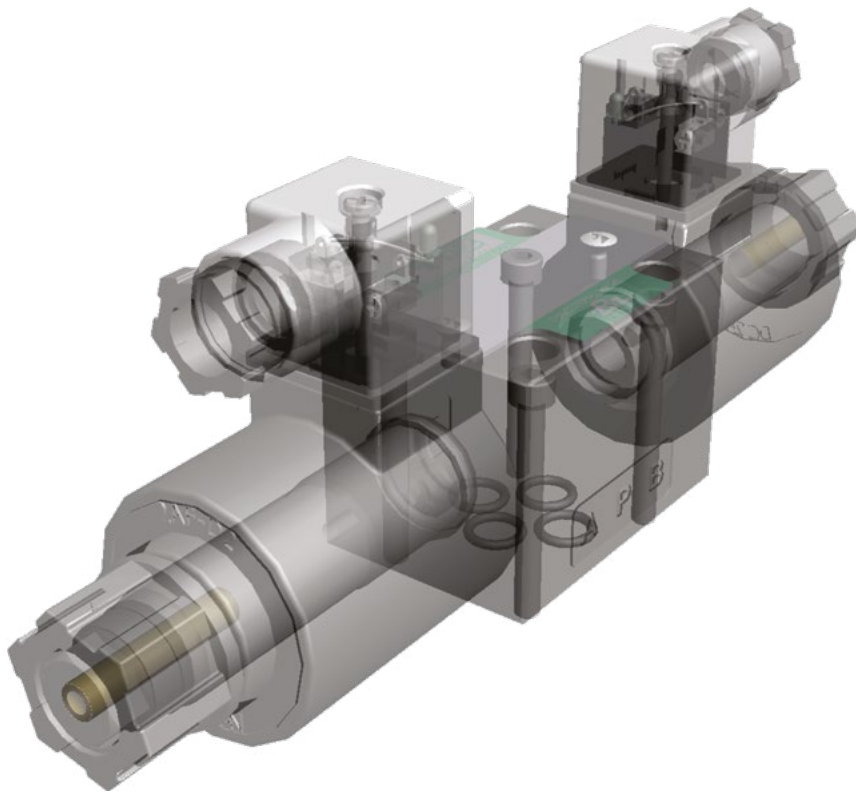
P T B A

MPC-06W





Bezares Group



Indice / Contents

Válvulas CETOP 10 / CETOP 10 Valves.....	49
SWH G10.....	50

Válvulas CETOP 10 / CETOP 10 Valves

3

5

7

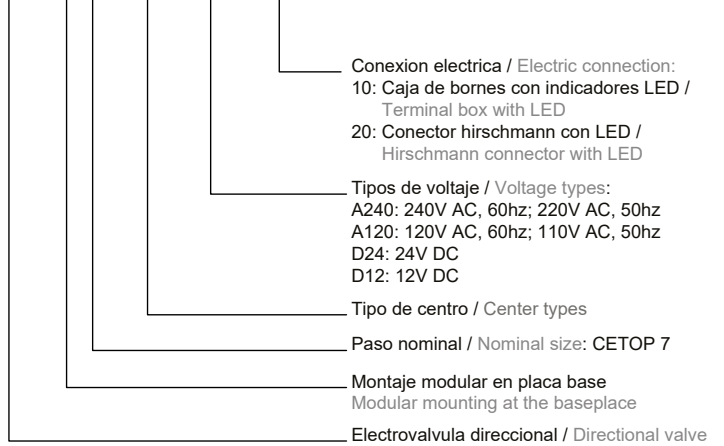
8

10

SWH G10



SWH - G10 - C2 - A220 - 10 - 31J



Datos Principales Main Data

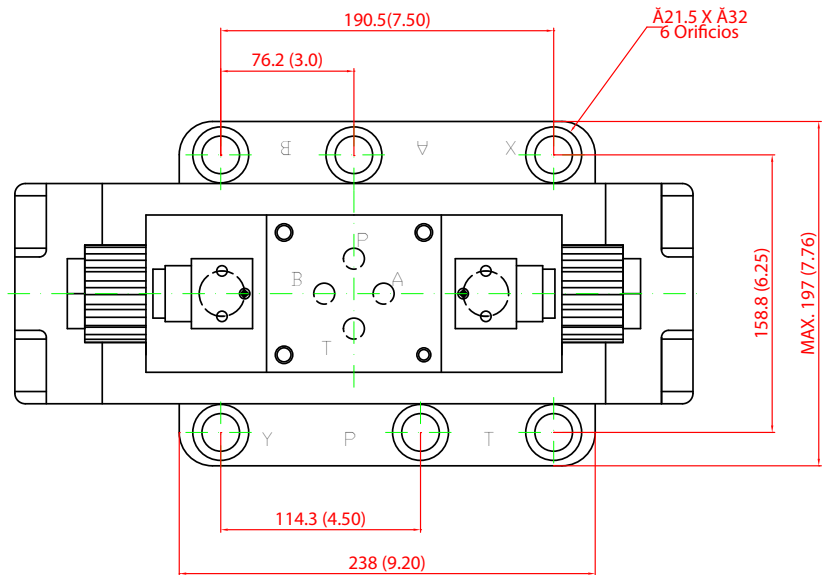
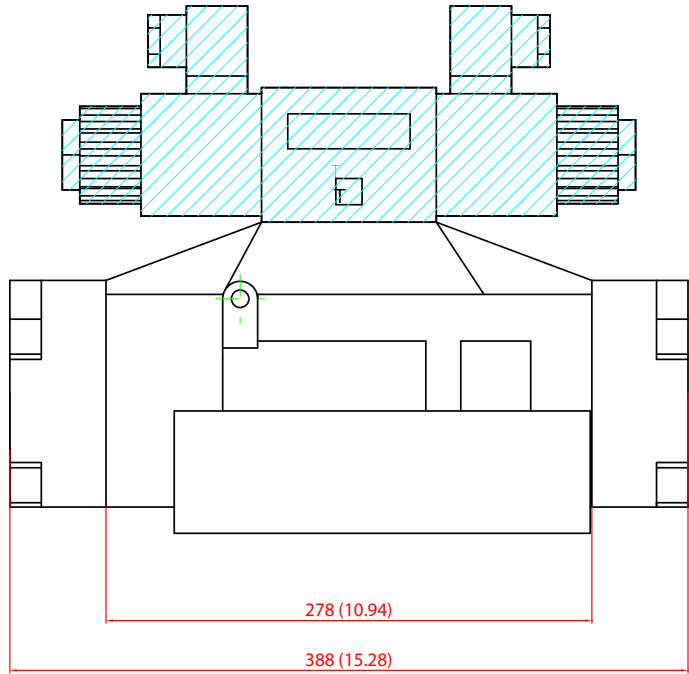
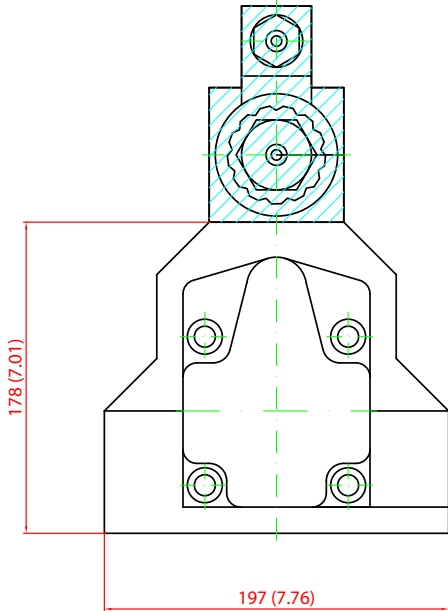
Temp. de trab. / Working Temp: 5°C - 60°C
 Visc. de aceite / Oil viscosity: 15 - 300 cst
 Filtración / Filtering: 25 micras

Presión de trabajo (P/A/B) / Work Pressure: 315 bar

Estándar / Standard		Inversa / Inverted	
Esquemas / Schemes	Referencias / P/N	Esquemas / Schemes	Referencias / P/N
	C2B		C2BS
	C3B		C3BS
	C4B		C4BS
	C40B		C40BS
	C5B		C5BS
	C6B		C6BS

	Esquemas / Schemes	Referencias / P/N	Caudal Máx. / Max flow
2 posiciones centrada por muelle / 2 positions spring-centered		SWH-G10-B2	30 - 63
		SWH-G10-B3	
		SWH-G10-B20	
3 posiciones centrada por muelle / 3 positions spring-centered		SWH-G10-C2	
		SWH-G10-C3	
		SWH-G10-C4	
		SWH-G10-C40	20 - 40
		SWH-G10-C5	
		SWH-G10-C6	

SWH G10



1. PEDIDOS: Los pedidos aceptados por nuestro Departamento de Ventas presuponen la aceptación de nuestras Condiciones Generales de Venta.

2. PRECIOS: Los precios de nuestra Tarifa deben ser considerados como de Venta al Público. Cualquier concesión de dto. será la acordada con nuestro Departamento de Ventas previa aceptación de la Dirección General de Bezares, S.A.

Todos los precios son considerados para la mercancía situada en nuestros Almacenes de Casarrubios del Monte. Los Portes de envío serán a cargo del consignatario, no responsabilizándose Bezares, S.A. del trato que la mercancía reciba en el transcurso de su transporte.

Las expediciones serán enviadas por las Agencias de Transporte que nos indiquen nuestros clientes.

3. IMPUESTOS: En nuestra Tarifa no están incluidos los vigentes. Cualquier cambio en los actuales o la disposición de otros nuevos serían considerados como de cumplimiento sobre la Tarifa establecida.

4. PLAZOS DE ENTREGA: Los plazos de entrega dependerán de la demanda, la entrega de materias primas por parte de nuestros proveedores u otras alteraciones por causa de fuerza mayor.

5. CONTENCIOSOS: Cualquier contencioso Jurídico-Administrativo dependerá única y exclusivamente de los Jueces y Tribunales de Madrid, reconociéndose dicha ciudad como lugar de cumplimiento de todas las cuestiones que puedan derivarse, renunciando el comprador a su fuero propio.

6. CONDICIONES DE PAGO: Serán las acordadas con nuestro Departamento de Contabilidad.

7. GARANTÍAS: Todos nuestros productos están garantizados contra todo defecto de fabricación. La garantía por uso se entenderá de un año a partir de la fecha de envío del material, con la salvedad de que la garantía dependerá del trato que la mercancía hubiese recibido y solamente será firme a partir del dictamen de nuestro servicio de Asistencia técnica ineludiblemente.

El fabricante no está obligado a pagar ninguna compensación por pérdida de ganancia o por pérdidas ocasionadas por defectos en los productos al margen de lo mencionado en este mismo punto sobre la garantía.

8. DEVOLUCIÓN DE MERCANCIAS: Para efectuar cualquier devolución de mercancías deberá sernos avisada previamente. No se aceptará, al ser recepcionada en nuestros Almacenes, ninguna expedición de devolución que no se envíe a Portes Pagados salvo autorizado por BEZARES, S.A. No se admitirán devoluciones de materiales transcurridos 30 días de la fecha de albarán.

1. Todos los materiales devueltos serán inspeccionados por el departamento de recepción de materiales para decidir sobre su estado.
2. El material deberá estar completamente nuevo, sin utilizar y que esté actualmente en venta, es decir que no esté obsoleto.
3. El sistema para el abono será el siguiente:
 - a. Se abonará el 95% del valor facturado desde el día siguiente a la venta del artículo, bajo las condiciones expresadas en el punto 2
 - b. Se abonará el 75% en los artículos facturados en el año anterior al año en curso.
 - c. No se aceptará ninguna devolución de material, transcurrido 2 años desde la fecha de albarán.
4. El abono será deducida en facturas futuras, siempre y cuando el cliente esté al corriente de pago.
5. Toda devolución deberá ser comunicada previamente, venir perfectamente documentada con su correspondiente hoja de devolución y ser enviada a portes pagados en origen. El incumplimiento de esta norma supondrá una penalización del 5% o 20% del importe de venta del material devuelto.

9. RESPONSABILIDAD: Bezares, S.A. no responde, en caso alguno del uso o montaje defectuoso de sus productos, de las averías o desperfectos causados por agentes exteriores, de los excesos de carga, lubricación inadecuada, desperfectos que pudieran aparecer en su montaje sobre cajas de cambio de vehículos usados, ni cualquier otra causa o accidente ajeno a su control.

10. PEDIDOS DE FABRICACION ESPECIAL: Todos los precios de nuestra Tarifa son de fabricación standard; para cualquier pedido de fabricación especial la oferta se adecuará a su realización particular.

11. PLANOS Y DESCRIPCIONES: Bezares, S.A. se reserva la propiedad de todos los planos, modelos y documentos técnicos proporcionados a sus clientes. No podrán, sin expreso consentimiento escrito de Bezares, S.A. ser utilizados, copiados, reproducidos, etc.... Reservándose Bezares, S.A. las acciones legales oportunas.

12. SEGUROS: Bezares, S.A. concertará un seguro cubriendo daños y pérdidas sólo si es expresamente solicitado por el comprador. El coste de dicho seguro será cargado al comprador separadamente.

- 1. ORDERS:** Orders accepted by our Sales Department presuppose acceptance of our General Conditions of Sale.
- 2. PRICES:** The prices in our price list must be considered as retail prices. Any granting of discount will be that which is agreed with our Sales Department with the prior acceptance of the Bezares S.A. General Management.

All prices are considered for the goods located in our Casarrubios del Monte warehouses. The carriage costs will be charged to the recipient, Bezares S.A. will not be liable for the treatment the goods receive during the transport.

The despatches will be sent by the transport companies as instructed by our customers.

- 3. TAXES:** The taxes in force are not included in our price list. Any change to the current taxes or the imposing of new ones would be considered as for payment in addition to the established price list.

- 4. DELIVERY TIMES:** Delivery times will depend on demand, the delivery of raw materials by our suppliers or other problems caused as a result of force majeure.

- 5. DISPUTES:** The Madrid Courts and Tribunals will have the sole and exclusive jurisdiction for any Legal-Administrative disputes, said city being accepted as the location for any matters of compliance that may arise and the buyer revoking the right to any other jurisdiction which may apply.

- 6. PAYMENT TERMS:** These will be those agreed with our Accounts Department.

- 7. GUARANTEES:** All of our products are guaranteed against all manufacturing faults. The guarantee for use will be understood as for one year commencing from the date of the despatch of the goods, with the reservation that the guarantee will depend on the treatment that the goods had received and will only be valid with a necessary report from our Technical Service Department.

The manufacturer will not be liable to pay any compensation for loss of profits or losses brought about by product defects beyond that stated in this same point in regard to the guarantee.

- 8. RETURN OF GOODS:** In order to make any return of goods we must be advised in advance. Our warehouses will not accept any despatch of returned goods that are sent "Carriage Due" unless authorised by BEZARES, S.A. The return of goods will not be accepted once 30 days have elapsed from the date of the delivery note.

1. All returned materials will be inspected by the materials reception department to decide on their state.
2. The material must be completely new, without having been used and that is currently on sale, this being that it is not obsolete.
3. The system for refunds will be as follows:
 - a. 95% of the invoice value will be refunded from the day following the sale of the article, under the conditions stated in point 2.
 - b. 75% will be refunded for the articles invoiced in the year prior to the year in progress.
 - c. No returns will be accepted after two years from the date of the delivery note.
4. The refund will be deducted from future invoices, provided that the customer is up to date with payments.
5. It is absolutely necessary that any return is previously informed, and authorized by Bezares's After-sales Department. Each package has to include inside, complete documentation explaining the reasons of the return, and the sticker outside, showing us "RETURN". The forms and the stickers are included inside the packing of all Bezares products.

- 9. LIABILITY:** Bezares, S.A. will not be held liable under any circumstances for their use or the defective assembly of its products, for breakdowns caused by external agents, excessive loads, inadequate lubrication, defects that may appear in the fitting of gear boxes to used vehicles, or for any other cause or accident outside of its control.

- 10. SPECIAL MANUFACTURING ORDERS:** All of the prices in our price list are for Standard manufacturing; for any special manufacturing order the offer will be adapted to the particular circumstances.

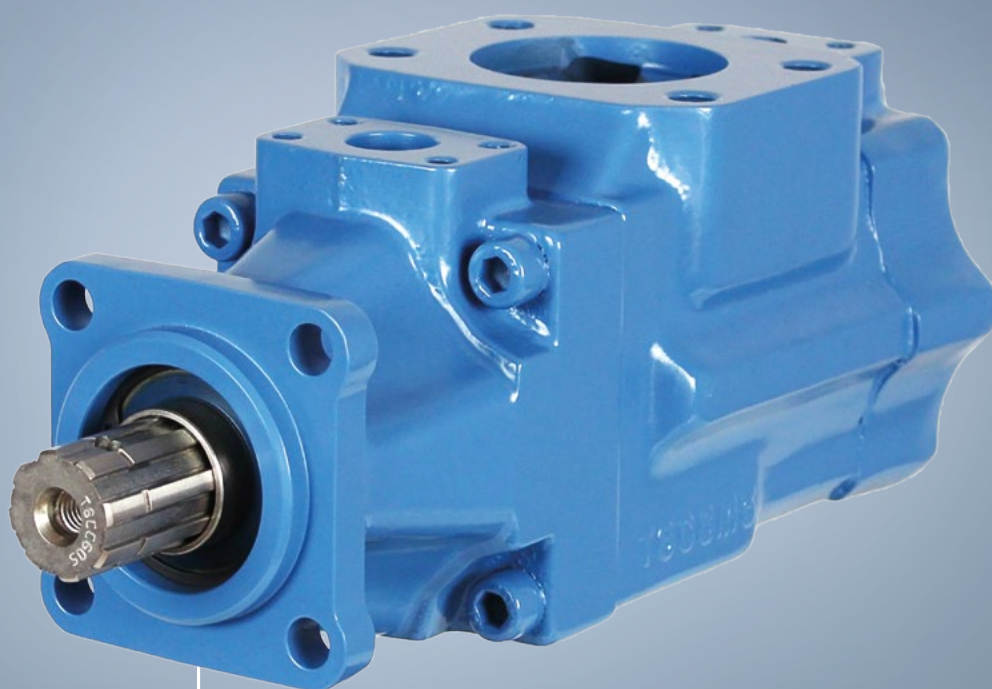
- 11. PLANS AND DESCRIPTIONS:** Bezares, S.A. retains ownership of all of the plans, models and technical documents supplied to its customers. They cannot be used, copied, reproduced, etc. without the prior express written authorisation of BEZARES, S.A. Bezares, S.A. reserves the right to take such legal action as is appropriate.

- 12. INSURANCES:** Bezares, S.A. will arrange insurance to cover damages and losses only if it is expressly requested by the purchaser. The cost of said insurance will be charged separately to the customer.



Hydraulic Equipment

World reference in hydraulic
equipment manufacturing



VANE PUMPS AND MOTORS

Vane pumps and motors for multiple applications.

Image: DT6GC

Bezares Barcelona

Calle Mollet, 28 08120 La Llagosta,
Barcelona, Spain • +34 935 743 655
bezaresbarna@bezares.com

Bezares France

106, Avenue des roses, Zac de la butte gayen
94440 Santeny, France • +33 014 510 1540
bezaresfrance@bezares.com

Bezares China

No. 8. Hongfu East Road, Yaozhuang Town
Zhejiang Province • China
+86 573 84777638 • china@bezares.com

Bezares Mexico

4ª avenida nº 980 colonia. Zimix
Santa catarina, n.l. Mexico, 66358 Monterrey
+52 81 1287 0090 • info@bezaresmexico.com

Bezares Italy

11, via dell' artigianato 31034
Cavaso del tomba, Italy • +390 423 544 105
italia@bezares.com

Bezares USA

27634 Commerce Oaks Drive, Oak Ridge north,
Texas 77385, USA • +1 888 663 1786
pto@bezares.com

993800/03/07/19



TDZ

Calle Joaquín Costa, 10
50001 Zaragoza
Spain
+34 97 623 30 62
sales@tdz.com

BEZARES HEADQUARTERS

Av. de las Retamas, 145
45950 Casarrubios del Monte
Toledo, Spain
+34 91 818 82 97
bezares@bezares.com



bezares.com



tdz.com